

## EFHD1 Antibody (monoclonal) (M08)

Mouse monoclonal antibody raised against a partial recombinant EFHD1.

Catalog # AT1859a

### Product Information

---

<b>Application</b>	WB
<b>Primary Accession</b>	<a href="#">Q9BUP0</a>
<b>Other Accession</b>	<a href="#">NM_025202</a>
<b>Reactivity</b>	Human, Mouse, Rat
<b>Host</b>	mouse
<b>Clonality</b>	monoclonal
<b>Isotype</b>	IgG2a Kappa
<b>Clone Names</b>	1F5
<b>Calculated MW</b>	26928

### Additional Information

---

<b>Gene ID</b>	80303
<b>Other Names</b>	EF-hand domain-containing protein D1, EF-hand domain-containing protein 1, Swiprosin-2, EFHD1, SWS2
<b>Target/Specificity</b>	EFHD1 (NP_079478.1, 168 a.a. ~ 238 a.a) partial recombinant protein with GST tag. MW of the GST tag alone is 26 KDa.
<b>Dilution</b>	WB~~1:500~1000
<b>Format</b>	Clear, colorless solution in phosphate buffered saline, pH 7.2 .
<b>Storage</b>	Store at -20°C or lower. Aliquot to avoid repeated freezing and thawing.
<b>Precautions</b>	EFHD1 Antibody (monoclonal) (M08) is for research use only and not for use in diagnostic or therapeutic procedures.

### Background

---

EFHD1 is an EF-hand domain-containing protein that displays increased expression during neuronal differentiation (Tominaga and Tomooka, 2002 [PubMed 12270117]).

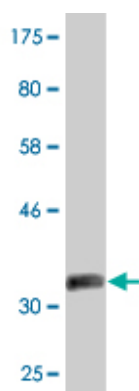
### References

---

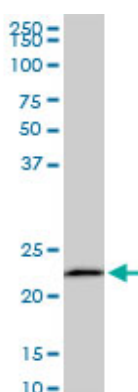
Large-scale mapping of human protein-protein interactions by mass spectrometry. Ewing RM, et al. Mol Syst Biol, 2007. PMID 17353931. Large-scale cDNA transfection screening for genes related to cancer development and progression. Wan D, et al. Proc Natl Acad Sci U S A, 2004 Nov 2. PMID 15498874. The status, quality, and expansion of the NIH full-length cDNA project: the Mammalian Gene Collection (MGC).

Gerhard DS, et al. Genome Res, 2004 Oct. PMID 15489334. Complete sequencing and characterization of 21,243 full-length human cDNAs. Ota T, et al. Nat Genet, 2004 Jan. PMID 14702039. Generation and initial analysis of more than 15,000 full-length human and mouse cDNA sequences. Strausberg RL, et al. Proc Natl Acad Sci U S A, 2002 Dec 24. PMID 12477932.

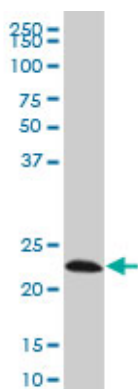
## Images



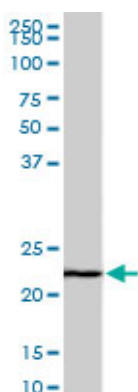
Antibody Reactive Against Recombinant Protein. Western Blot detection against Immunogen (33.44 KDa) .



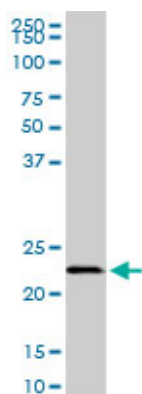
EFHD1 monoclonal antibody (M08), clone 1F5. Western Blot analysis of EFHD1 expression in PC-12 (Cat # AT1859a )



EFHD1 monoclonal antibody (M08), clone 1F5 Western Blot analysis of EFHD1 expression in Hela S3 NE ( Cat # AT1859a )



EFHD1 monoclonal antibody (M08), clone 1F5. Western Blot analysis of EFHD1 expression in Raw 264.7 (Cat # AT1859a )



EFHD1 monoclonal antibody (M08), clone 1F5. Western Blot analysis of EFHD1 expression in NIH/3T3((Cat # AT1859a )

Please note: All products are 'FOR RESEARCH USE ONLY. NOT FOR USE IN DIAGNOSTIC OR THERAPEUTIC PROCEDURES'.