

EGR1 Antibody (monoclonal) (M03)

Mouse monoclonal antibody raised against a partial recombinant EGR1.

Catalog # AT1864a

Product Information

Application	WB, IHC, IF, E
Primary Accession	P18146
Other Accession	NM_001964
Reactivity	Human
Host	Mouse
Clonality	monoclonal
Isotype	IgG2a Kappa
Clone Names	6E9
Calculated MW	57507

Additional Information

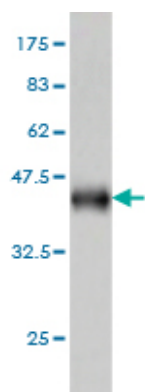
Gene ID	1958
Other Names	Early growth response protein 1, EGR-1, AT225, Nerve growth factor-induced protein A, NGFI-A, Transcription factor ETR103, Transcription factor Zif268, Zinc finger protein 225, Zinc finger protein Krox-24, EGR1, KROX24, ZNF225
Target/Specificity	EGR1 (NP_001955, 444 a.a. ~ 543 a.a) partial recombinant protein with GST tag. MW of the GST tag alone is 26 KDa.
Dilution	WB~~1:500~1000 IHC~~1:100~500 IF~~1:50~200 E~~N/A
Format	Clear, colorless solution in phosphate buffered saline, pH 7.2 .
Storage	Store at -20°C or lower. Aliquot to avoid repeated freezing and thawing.
Precautions	EGR1 Antibody (monoclonal) (M03) is for research use only and not for use in diagnostic or therapeutic procedures.

Background

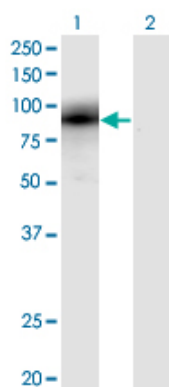
The protein encoded by this gene belongs to the EGR family of C2H2-type zinc-finger proteins. It is a nuclear protein and functions as a transcriptional regulator. The products of target genes it activates are required for differentiation and mitogenesis. Studies suggest this is a cancer suppressor gene.

References

1. Induction of hypertrophy in vitro by mechanical loading in adult rabbit myocardium. Bupha-Intr T, Holmes JW, Janssen PM. Am J Physiol Heart Circ Physiol. 2007 Dec;293(6):H3759-67. Epub 2007 Oct 12.

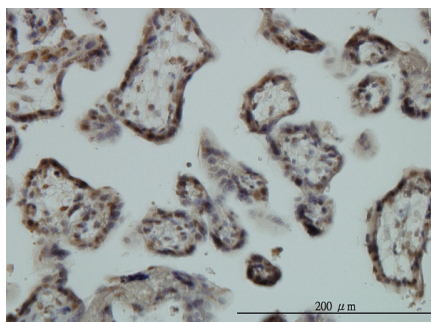


Antibody Reactive Against Recombinant Protein. Western Blot detection against Immunogen (36.74 KDa) .

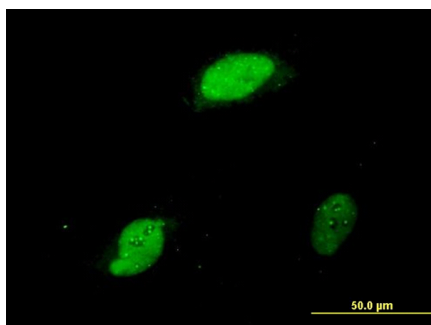


Western Blot analysis of EGR1 expression in transfected 293T cell line by EGR1 monoclonal antibody (M03), clone 6E8.

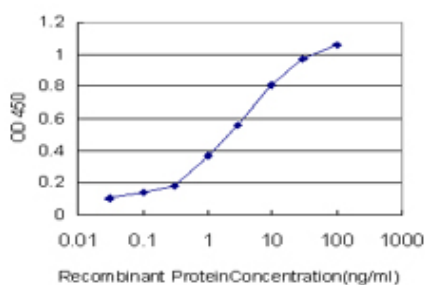
Lane 1: EGR1 transfected lysate(59.73 KDa).
Lane 2: Non-transfected lysate.



Immunoperoxidase of monoclonal antibody to EGR1 on formalin-fixed paraffin-embedded human placenta. [antibody concentration 3 ug/ml]



Immunofluorescence of monoclonal antibody to EGR1 on HeLa cell. [antibody concentration 10 ug/ml]



Detection limit for recombinant GST tagged EGR1 is approximately 0.1ng/ml as a capture antibody.

Please note: All products are 'FOR RESEARCH USE ONLY. NOT FOR USE IN DIAGNOSTIC OR THERAPEUTIC PROCEDURES'.