

EHD2 Antibody (monoclonal) (M01)

Mouse monoclonal antibody raised against a partial recombinant EHD2.

Catalog # AT1866a

Product Information

Application	WB, IF, E
Primary Accession	Q9NZN4
Other Accession	NM_014601
Reactivity	Human
Host	mouse
Clonality	monoclonal
Isotype	IgG1 Kappa
Clone Names	2D8
Calculated MW	61161

Additional Information

Gene ID	30846
Other Names	EH domain-containing protein 2, PAST homolog 2, EHD2, PAST2
Target/Specificity	EHD2 (NP_055416, 365 a.a. ~ 427 a.a) partial recombinant protein with GST tag. MW of the GST tag alone is 26 KDa.
Dilution	WB~~1:500~1000 IF~~1:50~200 E~~N/A
Format	Clear, colorless solution in phosphate buffered saline, pH 7.2 .
Storage	Store at -20°C or lower. Aliquot to avoid repeated freezing and thawing.
Precautions	EHD2 Antibody (monoclonal) (M01) is for research use only and not for use in diagnostic or therapeutic procedures.

Background

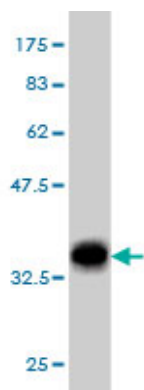
This gene encodes a member of the EH domain-containing protein family. These proteins are characterized by a C-terminal EF-hand domain, a nucleotide-binding consensus site at the N terminus and a bipartite nuclear localization signal. The encoded protein interacts with the actin cytoskeleton through an N-terminal domain and also binds to an EH domain-binding protein through the C-terminal EH domain. This interaction appears to connect clathrin-dependent endocytosis to actin, suggesting that this gene product participates in the endocytic pathway.

References

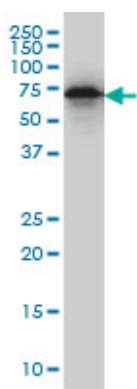
EH domain proteins regulate cardiac membrane protein targeting. Gudmundsson H, et al. Circ Res, 2010 Jul

9. PMID 20489164. Architectural and mechanistic insights into an EHD ATPase involved in membrane remodelling. Daumke O, et al. Nature, 2007 Oct 3. PMID 17914359. Diversification of transcriptional modulation: large-scale identification and characterization of putative alternative promoters of human genes. Kimura K, et al. Genome Res, 2006 Jan. PMID 16344560. C-terminal EH-domain-containing proteins: consensus for a role in endocytic trafficking, EH? Naslavsky N, et al. J Cell Sci, 2005 Sep 15. PMID 16155252. The status, quality, and expansion of the NIH full-length cDNA project: the Mammalian Gene Collection (MGC). Gerhard DS, et al. Genome Res, 2004 Oct. PMID 15489334.

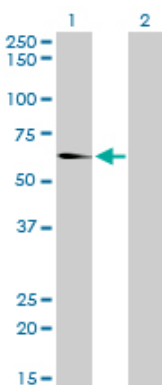
Images



Antibody Reactive Against Recombinant Protein. Western Blot detection against Immunogen (32.67 KDa) .

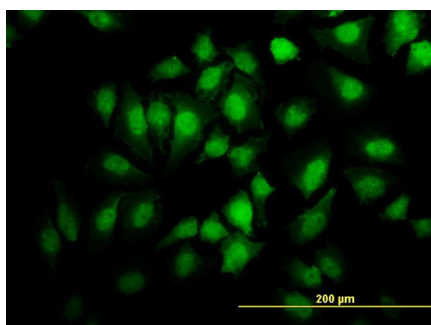


EHD2 monoclonal antibody (M01), clone 2D8 Western Blot analysis of EHD2 expression in HeLa (Cat # AT1866a)

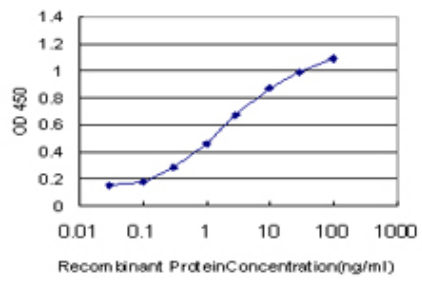


Western Blot analysis of EHD2 expression in transfected 293T cell line by EHD2 monoclonal antibody (M01), clone 2D8.

Lane 1: EHD2 transfected lysate (61.2 KDa).
Lane 2: Non-transfected lysate.



Immunofluorescence of monoclonal antibody to EHD2 on HeLa cell. [antibody concentration 10 ug/ml]



Detection limit for recombinant GST tagged EHD2 is approximately 0.03ng/ml as a capture antibody.

Please note: All products are 'FOR RESEARCH USE ONLY. NOT FOR USE IN DIAGNOSTIC OR THERAPEUTIC PROCEDURES'.