

EHD4 Antibody (monoclonal) (M01)

Mouse monoclonal antibody raised against a full length recombinant EHD4.

Catalog # AT1868a

Product Information

Application	WB, IF
Primary Accession	Q9H223
Other Accession	BC006287
Reactivity	Human
Host	mouse
Clonality	monoclonal
Isotype	IgG1 kappa
Clone Names	1B8
Calculated MW	61175

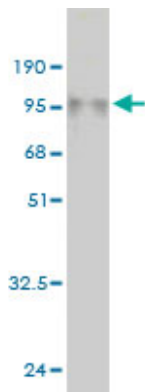
Additional Information

Gene ID	30844
Other Names	EH domain-containing protein 4, Hepatocellular carcinoma-associated protein 10/11, PAST homolog 4, EHD4, HCA10, HCA11, PAST4
Target/Specificity	EHD4 (AAH06287, 1 a.a. ~ 541 a.a) full-length recombinant protein with GST tag. MW of the GST tag alone is 26 KDa.
Dilution	WB~~1:500~1000 IF~~1:50~200
Format	Clear, colorless solution in phosphate buffered saline, pH 7.2 .
Storage	Store at -20°C or lower. Aliquot to avoid repeated freezing and thawing.
Precautions	EHD4 Antibody (monoclonal) (M01) is for research use only and not for use in diagnostic or therapeutic procedures.

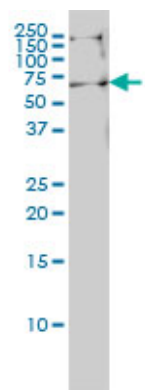
References

EH domain proteins regulate cardiac membrane protein targeting. Gudmundsson H, et al. Circ Res, 2010 Jul 9. PMID 20489164. A role for EHD4 in the regulation of early endosomal transport. Sharma M, et al. Traffic, 2008 Jun. PMID 18331452. Large-scale mapping of human protein-protein interactions by mass spectrometry. Ewing RM, et al. Mol Syst Biol, 2007. PMID 17353931. Immunoaffinity profiling of tyrosine phosphorylation in cancer cells. Rush J, et al. Nat Biotechnol, 2005 Jan. PMID 15592455. The status, quality, and expansion of the NIH full-length cDNA project: the Mammalian Gene Collection (MGC). Gerhard DS, et al. Genome Res, 2004 Oct. PMID 15489334.

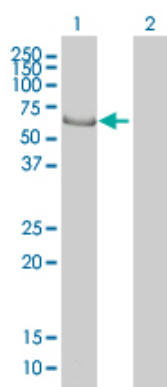
Images



Antibody Reactive Against Recombinant Protein. Western Blot detection against Immunogen (85.25 KDa) .

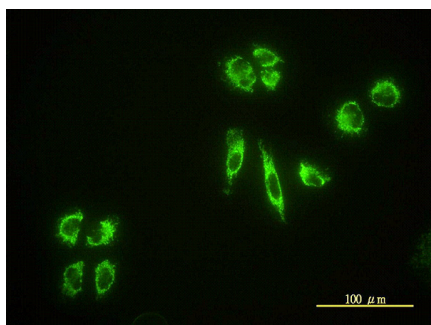


EHD4 monoclonal antibody (M01), clone 1B8 Western Blot analysis of EHD4 expression in HeLa S3 NE ((Cat # AT1868a)



Western Blot analysis of EHD4 expression in transfected 293T cell line by EHD4 monoclonal antibody (M01), clone 1B8.

Lane 1: EHD4 transfected lysate(61 KDa).
Lane 2: Non-transfected lysate.



Immunofluorescence of monoclonal antibody to EHD4 on HeLa cell. [antibody concentration 10 ug/ml]

Please note: All products are 'FOR RESEARCH USE ONLY. NOT FOR USE IN DIAGNOSTIC OR THERAPEUTIC PROCEDURES'.