

EIF4ENIF1 Antibody (monoclonal) (M01)

Mouse monoclonal antibody raised against a partial recombinant EIF4ENIF1.

Catalog # AT1879a

Product Information

Application	WB, IF
Primary Accession	Q9NRA8
Other Accession	NM_019843
Reactivity	Human
Host	mouse
Clonality	monoclonal
Isotype	IgG2a Kappa
Clone Names	2C4
Calculated MW	108201

Additional Information

Gene ID	56478
Other Names	Eukaryotic translation initiation factor 4E transporter, 4E-T, eIF4E transporter, Eukaryotic translation initiation factor 4E nuclear import factor 1, EIF4ENIF1
Target/Specificity	EIF4ENIF1 (NP_062817, 886 a.a. ~ 985 a.a) partial recombinant protein with GST tag. MW of the GST tag alone is 26 KDa.
Dilution	WB~~1:500~1000 IF~~1:50~200
Format	Clear, colorless solution in phosphate buffered saline, pH 7.2 .
Storage	Store at -20°C or lower. Aliquot to avoid repeated freezing and thawing.
Precautions	EIF4ENIF1 Antibody (monoclonal) (M01) is for research use only and not for use in diagnostic or therapeutic procedures.

Background

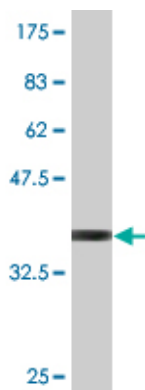
The protein encoded by this gene is a nucleocytoplasmic shuttle protein for the translation initiation factor eIF4E. This shuttle protein interacts with the importin alpha-beta complex to mediate nuclear import of eIF4E. It is predominantly cytoplasmic; its own nuclear import is regulated by a nuclear localization signal and nuclear export signals. Multiple transcript variants encoding different isoforms have been found for this gene.

References

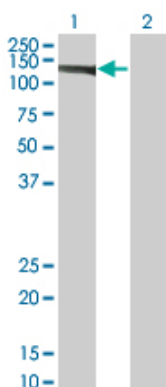
The Hsp90 inhibitor geldanamycin abrogates colocalization of eIF4E and eIF4E-transporter into stress

granules and association of eIF4E with eIF4G. Suzuki Y, et al. J Biol Chem, 2009 Dec 18. PMID 19850929. An empirical framework for binary interactome mapping. Venkatesan K, et al. Nat Methods, 2009 Jan. PMID 19060904. Ectopic expression of eIF4E-transporter triggers the movement of eIF4E into P-bodies, inhibiting steady-state translation but not the pioneer round of translation. Lee HC, et al. Biochem Biophys Res Commun, 2008 May 16. PMID 18343217. Toward a confocal subcellular atlas of the human proteome. Barbe L, et al. Mol Cell Proteomics, 2008 Mar. PMID 18029348. Prominent use of distal 5' transcription start sites and discovery of a large number of additional exons in ENCODE regions. Denoeud F, et al. Genome Res, 2007 Jun. PMID 17567994.

Images

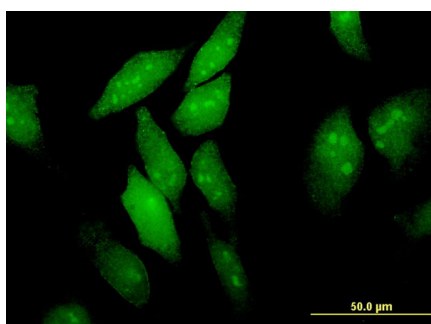


Antibody Reactive Against Recombinant Protein. Western Blot detection against Immunogen (36.74 KDa) .



Western Blot analysis of EIF4ENIF1 expression in transfected 293T cell line by EIF4ENIF1 monoclonal antibody (M01), clone 2C4.

Lane 1: EIF4ENIF1 transfected lysate (108.201 KDa).
Lane 2: Non-transfected lysate.



Immunofluorescence of monoclonal antibody to EIF4ENIF1 on HeLa cell . [antibody concentration 10 ug/ml]

Please note: All products are 'FOR RESEARCH USE ONLY. NOT FOR USE IN DIAGNOSTIC OR THERAPEUTIC PROCEDURES'.