

EIF4G1 Antibody (monoclonal) (M10)

Mouse monoclonal antibody raised against a partial recombinant EIF4G1.

Catalog # AT1881a

Product Information

| | |
|--------------------------|---------------------------|
| Application | WB, IF, E |
| Primary Accession | Q04637 |
| Other Accession | NM_182917 |
| Reactivity | Human, Mouse, Rat |
| Host | mouse |
| Clonality | monoclonal |
| Isotype | IgG2b Kappa |
| Clone Names | 2A9 |
| Calculated MW | 175491 |

Additional Information

| | |
|---------------------------|--|
| Gene ID | 1981 |
| Other Names | Eukaryotic translation initiation factor 4 gamma 1, eIF-4-gamma 1, eIF-4G 1, eIF-4G1, p220, EIF4G1, EIF4F, EIF4G, EIF4GI |
| Target/Specificity | EIF4G1 (NP_886553, 1500 a.a. ~ 1599 a.a) partial recombinant protein with GST tag. MW of the GST tag alone is 26 KDa. |
| Dilution | WB~~1:500~1000 IF~~1:50~200 E~~N/A |
| Format | Clear, colorless solution in phosphate buffered saline, pH 7.2 . |
| Storage | Store at -20°C or lower. Aliquot to avoid repeated freezing and thawing. |
| Precautions | EIF4G1 Antibody (monoclonal) (M10) is for research use only and not for use in diagnostic or therapeutic procedures. |

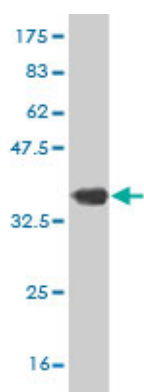
Background

The protein encoded by this gene is a component of the multi-subunit protein complex EIF4F. This complex facilitates the recruitment of mRNA to the ribosome, which is a rate-limiting step during the initiation phase of protein synthesis. The recognition of the mRNA cap and the ATP-dependent unwinding of 5'-terminal secondary structure is catalyzed by factors in this complex. The subunit encoded by this gene is a large scaffolding protein that contains binding sites for other members of the EIF4F complex. A domain at its N-terminus can also interact with the poly(A)-binding protein, which may mediate the circularization of mRNA during translation. Alternative splicing results in multiple transcript variants, some of which are derived from alternative promoter usage.

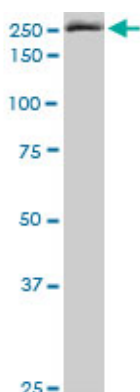
References

Over-expression of eukaryotic translation initiation factor 4 gamma 1 correlates with tumor progression and poor prognosis in nasopharyngeal carcinoma. Tu L, et al. Mol Cancer, 2010 Apr 16. PMID 20398343. Nuclear assortment of eIF4E coincides with shut-off of host protein synthesis upon poliovirus infection. Sukarieh R, et al. J Gen Virol, 2010 May. PMID 20053821. NAD(P)H quinone-oxydoreductase 1 protects eukaryotic translation initiation factor 4GI from degradation by the proteasome. Alard A, et al. Mol Cell Biol, 2010 Feb. PMID 20028737. HIV- 1 protease inhibits Cap- and poly(A)-dependent translation upon eIF4GI and PABP cleavage. Castell? A, et al. PLoS One, 2009 Nov 24. PMID 19956697. The Hsp90 inhibitor geldanamycin abrogates colocalization of eIF4E and eIF4E-transporter into stress granules and association of eIF4E with eIF4G. Suzuki Y, et al. J Biol Chem, 2009 Dec 18. PMID 19850929.

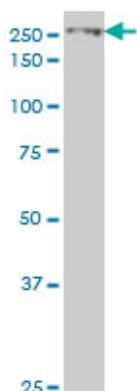
Images



Antibody Reactive Against Recombinant Protein. Western Blot detection against Immunogen (36.74 KDa) .

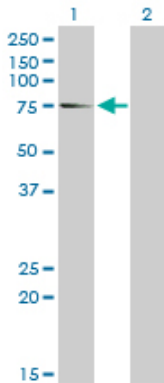
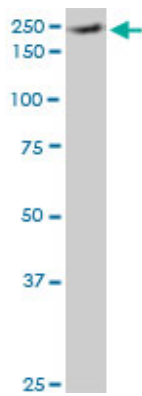


EIF4G1 monoclonal antibody (M10), clone 2A9. Western Blot analysis of EIF4G1 expression in PC-12 (Cat # AT1881a)



EIF4G1 monoclonal antibody (M10), clone 2A9 Western Blot analysis of EIF4G1 expression in HepG2 (Cat # AT1881a)

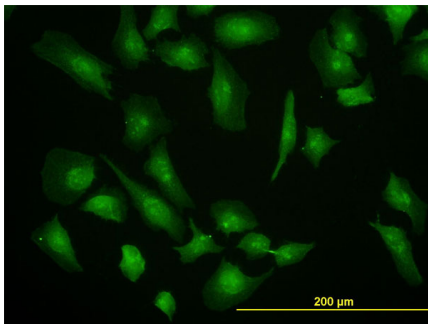
EIF4G1 monoclonal antibody (M10), clone 2A9. Western Blot analysis of EIF4G1 expression in NIH/3T3 (Cat # AT1881a)



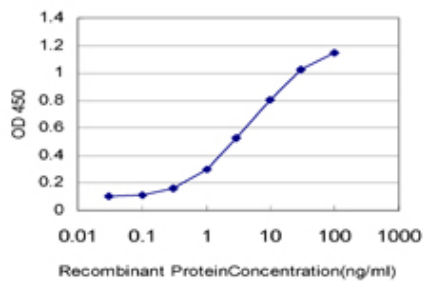
Western Blot analysis of EIF4G1 expression in transfected 293T cell line by EIF4G1 monoclonal antibody (M10), clone 2A9.

Lane 1: EIF4G1 transfected lysate(70.95 KDa).

Lane 2: Non-transfected lysate.



Immunofluorescence of monoclonal antibody to EIF4G1 on HeLa cell. [antibody concentration 10 ug/ml]



Detection limit for recombinant GST tagged EIF4G1 is approximately 0.03ng/ml as a capture antibody.

Please note: All products are 'FOR RESEARCH USE ONLY. NOT FOR USE IN DIAGNOSTIC OR THERAPEUTIC PROCEDURES'.