

ELF3 Antibody (monoclonal) (M01)

Mouse monoclonal antibody raised against a partial recombinant ELF3.
Catalog # AT1894a

Product Information

Application	WB, E
Primary Accession	P78545
Other Accession	BC003569
Reactivity	Human
Host	Mouse
Clonality	monoclonal
Isotype	IgG1 Kappa
Clone Names	1D8
Calculated MW	41454

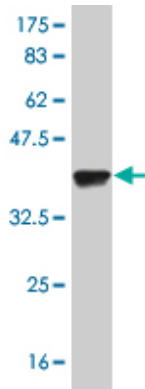
Additional Information

Gene ID	1999
Other Names	ETS-related transcription factor Elf-3, E74-like factor 3, Epithelial-restricted with serine box, Epithelium-restricted Ets protein ESX, Epithelium-specific Ets transcription factor 1, ESE-1, ELF3 (HGNC:3318)
Target/Specificity	ELF3 (AAH03569, 262 a.a. ~ 371 a.a) partial recombinant protein with GST tag. MW of the GST tag alone is 26 KDa.
Dilution	WB~~1:500~1000 E~~N/A
Format	Clear, colorless solution in phosphate buffered saline, pH 7.2 .
Storage	Store at -20°C or lower. Aliquot to avoid repeated freezing and thawing.
Precautions	ELF3 Antibody (monoclonal) (M01) is for research use only and not for use in diagnostic or therapeutic procedures.

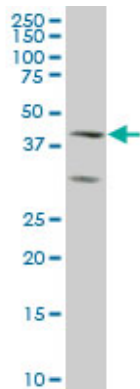
References

ESE-1/EGR-1 pathway plays a role in tolifenamic acid-induced apoptosis in colorectal cancer cells. Lee SH, et al. Mol Cancer Ther, 2008 Dec. PMID 19074849. Regulation of epithelium-specific Ets-like factors ESE-1 and ESE-3 in airway epithelial cells: potential roles in airway inflammation. Wu J, et al. Cell Res, 2008 Jun. PMID 18475289. ESE-1 inhibits the invasion of oral squamous cell carcinoma in conjunction with MMP-9 suppression. Iwai S, et al. Oral Dis, 2008 Mar. PMID 18302674. ESE-1 is a potent repressor of type II collagen gene (COL2A1) transcription in human chondrocytes. Peng H, et al. J Cell Physiol, 2008 May. PMID 18044710. Toward a confocal subcellular atlas of the human proteome. Barbe L, et al. Mol Cell Proteomics, 2008 Mar. PMID 18029348.

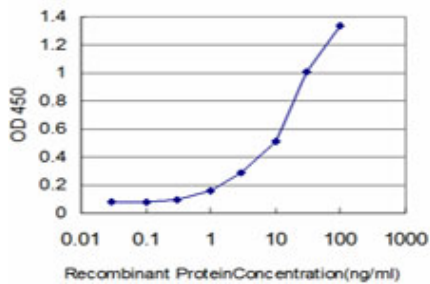
Images



Antibody Reactive Against Recombinant Protein. Western Blot detection against Immunogen (37.84 KDa) .



ELF3 monoclonal antibody (M01), clone 1D8 Western Blot analysis of ELF3 expression in A-431 ((Cat # AT1894a)



Detection limit for recombinant GST tagged ELF3 is approximately 0.3ng/ml as a capture antibody.

Please note: All products are 'FOR RESEARCH USE ONLY. NOT FOR USE IN DIAGNOSTIC OR THERAPEUTIC PROCEDURES'.