

# ELF5 Antibody (monoclonal) (M01)

Mouse monoclonal antibody raised against a partial recombinant ELF5.

Catalog # AT1896a

## Product Information

---

<b>Application</b>	WB, E
<b>Primary Accession</b>	<a href="#">Q9UKW6</a>
<b>Other Accession</b>	<a href="#">NM_198381</a>
<b>Reactivity</b>	Human
<b>Host</b>	mouse
<b>Clonality</b>	monoclonal
<b>Isotype</b>	IgG2a Kappa
<b>Clone Names</b>	3D10
<b>Calculated MW</b>	31263

## Additional Information

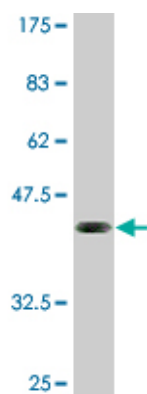
---

<b>Gene ID</b>	2001
<b>Other Names</b>	ETS-related transcription factor Elf-5, E74-like factor 5, Epithelium-restricted ESE-1-related Ets factor, Epithelium-specific Ets transcription factor 2, ESE-2, ELF5, ESE2
<b>Target/Specificity</b>	ELF5 (NP_938195.1, 166 a.a. ~ 263 a.a) partial recombinant protein with GST tag. MW of the GST tag alone is 26 KDa.
<b>Dilution</b>	WB~~1:500~1000 E~~N/A
<b>Format</b>	Clear, colorless solution in phosphate buffered saline, pH 7.2 .
<b>Storage</b>	Store at -20°C or lower. Aliquot to avoid repeated freezing and thawing.
<b>Precautions</b>	ELF5 Antibody (monoclonal) (M01) is for research use only and not for use in diagnostic or therapeutic procedures.

## Images

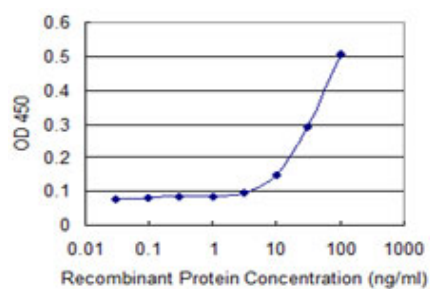
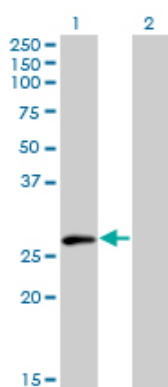
---

Antibody Reactive Against Recombinant Protein.Western Blot detection against Immunogen (36.52 KDa) .



Western Blot analysis of ELF5 expression in transfected 293T cell line by ELF5 monoclonal antibody (M01), clone 3D10.

Lane 1: ELF5 transfected lysate(30.1 KDa).  
Lane 2: Non-transfected lysate.



Detection limit for recombinant GST tagged ELF5 is 3 ng/ml as a capture antibody.

Please note: All products are 'FOR RESEARCH USE ONLY. NOT FOR USE IN DIAGNOSTIC OR THERAPEUTIC PROCEDURES'.