

## EMD Antibody (monoclonal) (M01)

Mouse monoclonal antibody raised against a partial recombinant EMD.

Catalog # AT1898a

### Product Information

---

<b>Application</b>	WB, IHC, IF, E
<b>Primary Accession</b>	<a href="#">P50402</a>
<b>Other Accession</b>	<a href="#">BC000738</a>
<b>Reactivity</b>	Human
<b>Host</b>	mouse
<b>Clonality</b>	monoclonal
<b>Isotype</b>	IgG2a Kappa
<b>Clone Names</b>	3B9
<b>Calculated MW</b>	28994

### Additional Information

---

<b>Gene ID</b>	2010
<b>Other Names</b>	Emerin, EMD, EDMD, STA
<b>Target/Specificity</b>	EMD (AAH00738, 1 a.a. ~ 110 a.a) partial recombinant protein with GST tag. MW of the GST tag alone is 26 KDa.
<b>Dilution</b>	WB~~1:500~1000 IHC~~1:100~500 IF~~1:50~200 E~~N/A
<b>Format</b>	Clear, colorless solution in phosphate buffered saline, pH 7.2 .
<b>Storage</b>	Store at -20°C or lower. Aliquot to avoid repeated freezing and thawing.
<b>Precautions</b>	EMD Antibody (monoclonal) (M01) is for research use only and not for use in diagnostic or therapeutic procedures.

### Background

---

Emerin is a serine-rich nuclear membrane protein and a member of the nuclear lamina-associated protein family. It mediates membrane anchorage to the cytoskeleton. Dreifuss-Emery muscular dystrophy is an X-linked inherited degenerative myopathy resulting from mutation in the emerin gene.

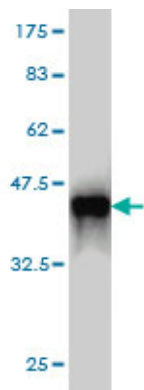
### References

---

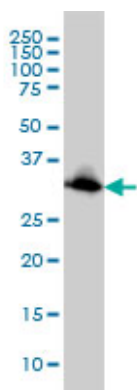
Variation at the NFATC2 Locus Increases the Risk of Thiazolinedione-Induced Edema in the Diabetes REduction Assessment with ramipril and rosiglitazone Medication (DREAM) Study. Bailey SD, et al. Diabetes Care, 2010 Jul 13. PMID 20628086. A novel custom resequencing array for dilated cardiomyopathy. Zimmerman RS, et al. Genet Med, 2010 May. PMID 20474083. Emery-Dreifuss dystrophy: a 4-year follow-up

on a laminopathy of special interest. Hausmanowa-Petrusewicz I, et al. Neurol Neurochir Pol, 2009 Sep-Oct. PMID 20054742. Gene-centric association signals for lipids and apolipoproteins identified via the HumanCVD BeadChip. Talmud PJ, et al. Am J Hum Genet, 2009 Nov. PMID 19913121. Tyrosine phosphorylation of nuclear-membrane protein emerin by Src, Abl and other kinases. Tiffert KE, et al. J Cell Sci, 2009 Oct 15. PMID 19789182.

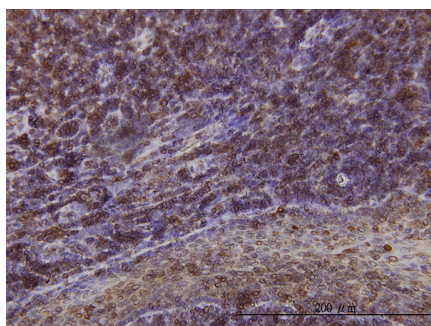
## Images



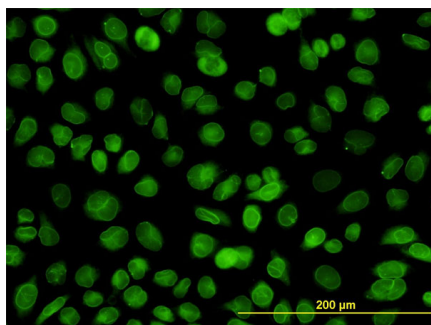
Antibody Reactive Against Recombinant Protein. Western Blot detection against Immunogen (37.84 kDa) .



EMD monoclonal antibody (M01), clone 3B9 Western Blot analysis of EMD expression in HeLa ( (Cat # AT1898a )

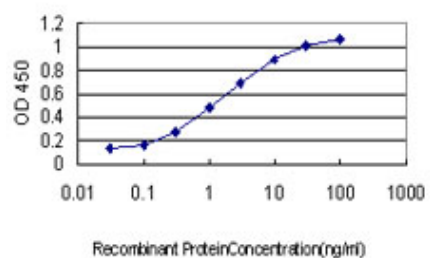


Immunoperoxidase of monoclonal antibody to EMD on formalin-fixed paraffin-embedded human tonsil. [antibody concentration 1 ug/ml]



Immunofluorescence of monoclonal antibody to EMD on HeLa cell. [antibody concentration 10 ug/ml]

Detection limit for recombinant GST tagged EMD is approximately 0.03ng/ml as a capture antibody.



Please note: All products are 'FOR RESEARCH USE ONLY. NOT FOR USE IN DIAGNOSTIC OR THERAPEUTIC PROCEDURES'.