

## EML2 Antibody (monoclonal) (M01)

Mouse monoclonal antibody raised against a full length recombinant EML2.

Catalog # AT1901a

### Product Information

---

<b>Application</b>	IHC, E
<b>Primary Accession</b>	<a href="#">O95834</a>
<b>Other Accession</b>	<a href="#">BC032630</a>
<b>Reactivity</b>	Human
<b>Host</b>	mouse
<b>Clonality</b>	monoclonal
<b>Isotype</b>	IgG2a Kappa
<b>Clone Names</b>	2H6
<b>Calculated MW</b>	70679

### Additional Information

---

<b>Gene ID</b>	24139
<b>Other Names</b>	Echinoderm microtubule-associated protein-like 2, EMAP-2, HuEMAP-2, EML2, EMAP2, EMAPL2
<b>Target/Specificity</b>	EML2 (AAH32630, 1 a.a. ~ 427 a.a) full-length recombinant protein with GST tag. MW of the GST tag alone is 26 KDa.
<b>Dilution</b>	IHC~~1:100~500 E~~N/A
<b>Format</b>	Clear, colorless solution in phosphate buffered saline, pH 7.2 .
<b>Storage</b>	Store at -20°C or lower. Aliquot to avoid repeated freezing and thawing.
<b>Precautions</b>	EML2 Antibody (monoclonal) (M01) is for research use only and not for use in diagnostic or therapeutic procedures.

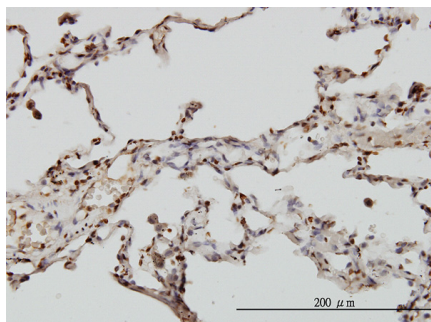
### References

---

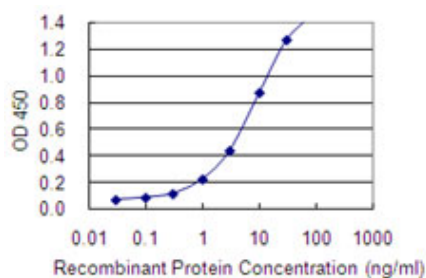
Toward a confocal subcellular atlas of the human proteome. Barbe L, et al. Mol Cell Proteomics, 2008 Mar. PMID 18029348. Large-scale mapping of human protein-protein interactions by mass spectrometry. Ewing RM, et al. Mol Syst Biol, 2007. PMID 17353931. The status, quality, and expansion of the NIH full-length cDNA project: the Mammalian Gene Collection (MGC). Gerhard DS, et al. Genome Res, 2004 Oct. PMID 15489334. Generation and initial analysis of more than 15,000 full-length human and mouse cDNA sequences. Strausberg RL, et al. Proc Natl Acad Sci U S A, 2002 Dec 24. PMID 12477932. The human EMAP-like protein-70 (ELP70) is a microtubule destabilizer that localizes to the mitotic apparatus. Eichenmuller B, et al. J Biol Chem, 2002 Jan 11. PMID 11694528.

## Images

---



Immunoperoxidase of monoclonal antibody to EML2 on formalin-fixed paraffin-embedded human lung. [antibody concentration 6  $\mu$ g/ml]



Detection limit for recombinant GST tagged EML2 is 0.1 ng/ml as a capture antibody.

Please note: All products are 'FOR RESEARCH USE ONLY. NOT FOR USE IN DIAGNOSTIC OR THERAPEUTIC PROCEDURES'.