

EML4 Antibody (monoclonal) (M01)

Mouse monoclonal antibody raised against a full length recombinant EML4.

Catalog # AT1902a

Product Information

Application	WB, IHC
Primary Accession	Q9HC35
Other Accession	BC008685
Reactivity	Human
Host	mouse
Clonality	monoclonal
Isotype	IgG1 Kappa
Clone Names	3C10
Calculated MW	108916

Additional Information

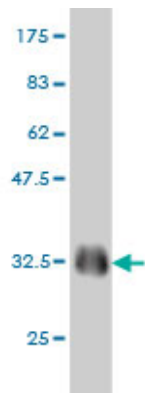
Gene ID	27436
Other Names	Echinoderm microtubule-associated protein-like 4, EMAP-4, Restrictedly overexpressed proliferation-associated protein, Ropp 120, EML4, C2orf2, EMAPL4
Target/Specificity	EML4 (AAH08685, 1 a.a. ~ 62 a.a) full-length recombinant protein with GST tag. MW of the GST tag alone is 26 KDa.
Dilution	WB~~1:500~1000 IHC~~1:100~500
Format	Clear, colorless solution in phosphate buffered saline, pH 7.2 .
Storage	Store at -20°C or lower. Aliquot to avoid repeated freezing and thawing.
Precautions	EML4 Antibody (monoclonal) (M01) is for research use only and not for use in diagnostic or therapeutic procedures.

References

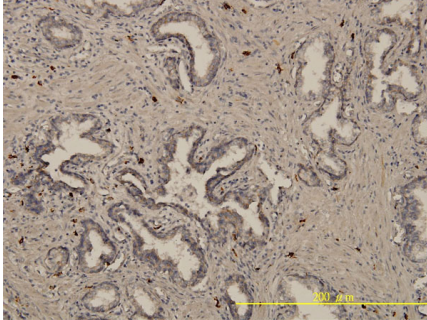
1.Expression analysis of EML4 in normal lung tissue and non-small cell lung cancer (NSCLC) in the absence and presence of chemotherapeutics.Radtke J, Rezaie SG, Kugler Ch, Zabel P, Schultz H, Vollmer E, Goldmann T, Lang DS.Rom J Morphol Embryol. 2010;51(4):647-53.

Images

Antibody Reactive Against Recombinant Protein.Western



Blot detection against Immunogen (32.56 KDa) .



Immunoperoxidase of monoclonal antibody to EML4 on formalin-fixed paraffin-embedded human prostate cancer. [antibody concentration 10 ug/ml]

Please note: All products are 'FOR RESEARCH USE ONLY. NOT FOR USE IN DIAGNOSTIC OR THERAPEUTIC PROCEDURES'.