

ENO2 Antibody (monoclonal) (M01)

Mouse monoclonal antibody raised against a partial recombinant ENO2.

Catalog # AT1910a

Product Information

Application	WB, E
Primary Accession	P09104
Other Accession	BC002745
Reactivity	Human
Host	mouse
Clonality	monoclonal
Isotype	IgG2a Kappa
Clone Names	1A3
Calculated MW	47269

Additional Information

Gene ID	2026
Other Names	Gamma-enolase, 2-phospho-D-glycerate hydro-lyase, Enolase 2, Neural enolase, Neuron-specific enolase, NSE, ENO2
Target/Specificity	ENO2 (AAH02745, 325 a.a. ~ 434 a.a) partial recombinant protein with GST tag. MW of the GST tag alone is 26 KDa.
Dilution	WB~~1:500~1000 E~~N/A
Format	Clear, colorless solution in phosphate buffered saline, pH 7.2 .
Storage	Store at -20°C or lower. Aliquot to avoid repeated freezing and thawing.
Precautions	ENO2 Antibody (monoclonal) (M01) is for research use only and not for use in diagnostic or therapeutic procedures.

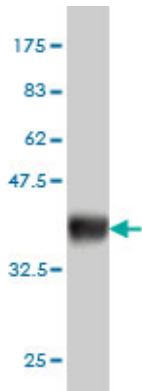
Background

This gene encodes one of the three enolase isoenzymes found in mammals. This isoenzyme, a homodimer, is found in mature neurons and cells of neuronal origin. A switch from alpha enolase to gamma enolase occurs in neural tissue during development in rats and primates.

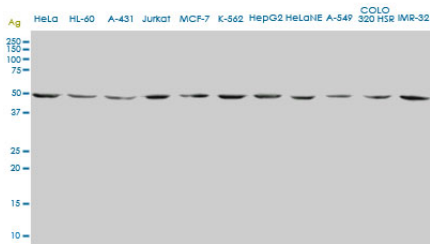
References

1.Identification of alpha-Enolase as an Autoantigen in Lung Cancer: Its Overexpression Is Associated with Clinical Outcomes.Chang GC, Liu KJ, Hsieh CL, Hu TS, Charoenfuprasert S, Liu HK, Luh KT, Hsu LH, Wu CW, Ting CC, Chen CY, Chen KC, Yang TY, Chou TY, Wang WH, Whang-Peng J, Shih NY.Clin Cancer Res. 2006 Oct

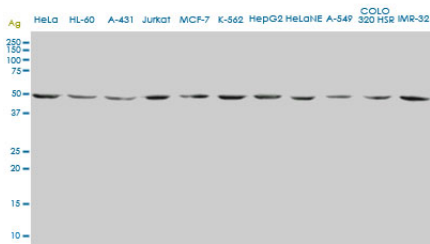
Images



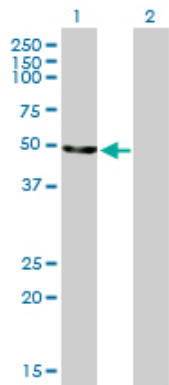
Antibody Reactive Against Recombinant Protein.Western Blot detection against Immunogen (37.84 KDa) .



ENO2 monoclonal antibody (M01), clone 1A3. Western Blot analysis of ENO2 expression in HeLa ((Cat # AT1910a)

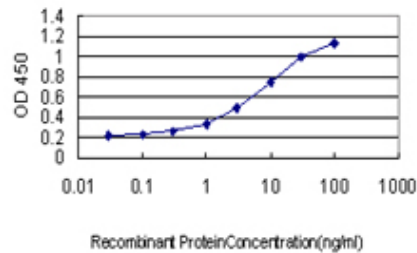


ENO2 monoclonal antibody (M01), clone 1A3. Western Blot analysis of ENO2 expression in different cell lines.



Western Blot analysis of ENO2 expression in transfected 293T cell line by ENO2 monoclonal antibody (M01), clone 1A3.

Lane 1: ENO2 transfected lysate(47.3 KDa).
Lane 2: Non-transfected lysate.



Detection limit for recombinant GST tagged ENO2 is approximately 0.1ng/ml as a capture antibody.

Please note: All products are 'FOR RESEARCH USE ONLY. NOT FOR USE IN DIAGNOSTIC OR THERAPEUTIC PROCEDURES'.