

ENTH Antibody (monoclonal) (M03)

Mouse monoclonal antibody raised against a partial recombinant ENTH.

Catalog # AT1915a

Product Information

Application	WB, IHC, IF, E
Primary Accession	Q14677
Other Accession	NM_014666
Reactivity	Human, Mouse, Rat
Host	mouse
Clonality	monoclonal
Isotype	IgG1 Kappa
Clone Names	1E7
Calculated MW	68259

Additional Information

Gene ID	9685
Other Names	Clathrin interactor 1, Clathrin-interacting protein localized in the trans-Golgi region, Clint, Enthoprotin, Epsin-4, Epsin-related protein, EpsinR, CLINT1, ENTH, EPN4, EPNR, KIAA0171
Target/Specificity	ENTH (NP_055481.1, 161 a.a. ~ 261 a.a) partial recombinant protein with GST tag. MW of the GST tag alone is 26 KDa.
Dilution	WB~~1:500~1000 IHC~~1:100~500 IF~~1:50~200 E~~N/A
Format	Clear, colorless solution in phosphate buffered saline, pH 7.2 .
Storage	Store at -20°C or lower. Aliquot to avoid repeated freezing and thawing.
Precautions	ENTH Antibody (monoclonal) (M03) is for research use only and not for use in diagnostic or therapeutic procedures.

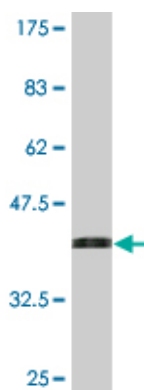
Background

This gene encodes a protein with similarity to the epsin family of endocytic adapter proteins. The encoded protein interacts with clathrin, the adapter protein AP-1 and phosphoinositides. This protein may be involved in the formation of clathrin coated vesicles and trafficking between the trans-Golgi network and endosomes. Mutations in this gene are associated with a susceptibility to schizophrenia and psychotic disorders. Alternate splicing results in multiple transcript variants.

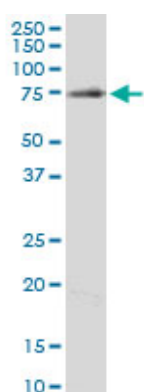
References

Comprehensive copy number variant (CNV) analysis of neuronal pathways genes in psychiatric disorders identifies rare variants within patients. Saus E, et al. J Psychiatr Res, 2010 Apr 14. PMID 20398908. Personalized smoking cessation: interactions between nicotine dose, dependence and quit-success genotype score. Rose JE, et al. Mol Med, 2010 Jul-Aug. PMID 20379614. Defining the human deubiquitinating enzyme interaction landscape. Sowa ME, et al. Cell, 2009 Jul 23. PMID 19615732. The epsin 4 gene is associated with psychotic disorders in families of Latin American origin. Escamilla M, et al. Schizophr Res, 2008 Dec. PMID 18929466. Failure to confirm an association between Epsin 4 and schizophrenia in a Japanese population. Richards M, et al. J Neural Transm, 2008 Sep. PMID 18696005.

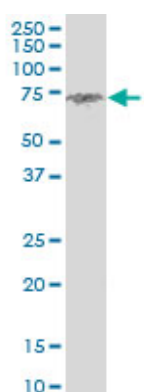
Images



Antibody Reactive Against Recombinant Protein. Western Blot detection against Immunogen (36.85 KDa) .

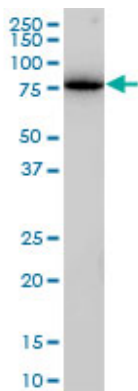


ENTH monoclonal antibody (M03), clone 1E6. Western Blot analysis of ENTH expression in PC-12 (Cat # AT1915a)

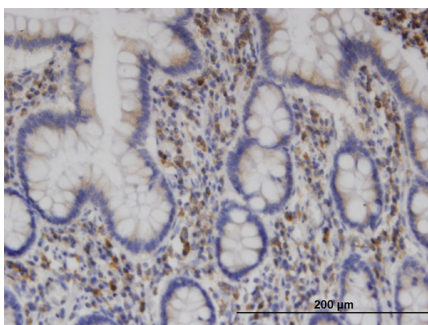
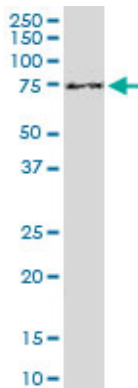


ENTH monoclonal antibody (M03), clone 1E6. Western Blot analysis of ENTH expression in Raw 264.7 (Cat # AT1915a)

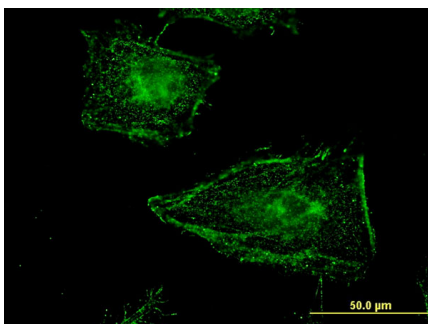
ENTH monoclonal antibody (M03), clone 1E6. Western Blot analysis of ENTH expression in Jurkat (Cat # AT1915a)



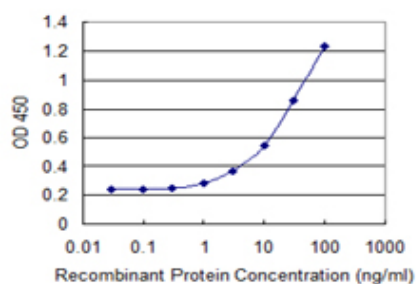
ENTH monoclonal antibody (M03), clone 1E6. Western Blot analysis of ENTH expression in NIH/3T3((Cat # AT1915a)



Immunoperoxidase of monoclonal antibody to CLINT1 on formalin-fixed paraffin-embedded human small Intestine. [antibody concentration 3 ug/ml]



Immunofluorescence of monoclonal antibody to CLINT1 on HeLa cell . [antibody concentration 10 ug/ml]



Detection limit for recombinant GST tagged CLINT1 is 0.3 ng/ml as a capture antibody.