

ENTPD6 Antibody (monoclonal) (M03)

Mouse monoclonal antibody raised against a partial recombinant ENTPD6.

Catalog # AT1917a

Product Information

| | |
|--------------------------|---------------------------|
| Application | WB, IHC |
| Primary Accession | O75354 |
| Other Accession | NM_001247 |
| Reactivity | Human |
| Host | mouse |
| Clonality | monoclonal |
| Isotype | IgG2a Kappa |
| Clone Names | 2D10 |
| Calculated MW | 53246 |

Additional Information

| | |
|---------------------------|--|
| Gene ID | 955 |
| Other Names | Ectonucleoside triphosphate diphosphohydrolase 6, NTPDase 6, CD39 antigen-like 2, ENTPD6, CD39L2, IL6ST2 |
| Target/Specificity | ENTPD6 (NP_001238, 386 a.a. ~ 484 a.a) partial recombinant protein with GST tag. MW of the GST tag alone is 26 KDa. |
| Dilution | WB~~1:500~1000 IHC~~1:100~500 |
| Format | Clear, colorless solution in phosphate buffered saline, pH 7.2 . |
| Storage | Store at -20°C or lower. Aliquot to avoid repeated freezing and thawing. |
| Precautions | ENTPD6 Antibody (monoclonal) (M03) is for research use only and not for use in diagnostic or therapeutic procedures. |

Background

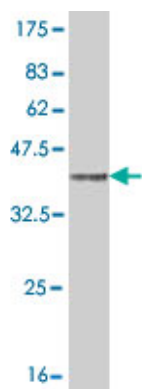
ENTPD6 is similar to E-type nucleotidases (NTPases). NTPases, such as CD39, mediate catabolism of extracellular nucleotides. ENTPD6 contains 4 apyrase-conserved regions which is characteristic of NTPases. Alternatively spliced transcript variants encoding different isoforms have been found for this gene.

References

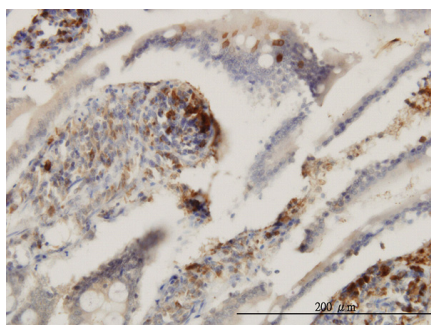
Variation at the NFATC2 Locus Increases the Risk of Thiazolinedinedione-Induced Edema in the Diabetes REduction Assessment with ramipril and rosiglitazone Medication (DREAM) Study. Bailey SD, et al. Diabetes Care, 2010 Jul 13. PMID 20628086. Gene-centric association signals for lipids and apolipoproteins identified

via the HumanCVD BeadChip. Talmud PJ, et al. Am J Hum Genet, 2009 Nov. PMID 19913121. A protein-protein interaction network for human inherited ataxias and disorders of Purkinje cell degeneration. Lim J, et al. Cell, 2006 May 19. PMID 16713569. The LIFEdb database in 2006. Mehrle A, et al. Nucleic Acids Res, 2006 Jan 1. PMID 16381901. Signal sequence and keyword trap in silico for selection of full-length human cDNAs encoding secretion or membrane proteins from oligo-capped cDNA libraries. Otsuki T, et al. DNA Res, 2005. PMID 16303743.

Images



Antibody Reactive Against Recombinant Protein. Western Blot detection against Immunogen (36.63 KDa) .



Immunoperoxidase of monoclonal antibody to ENTPD6 on formalin-fixed paraffin-embedded human small Intestine. [antibody concentration 3 ug/ml]

Please note: All products are 'FOR RESEARCH USE ONLY. NOT FOR USE IN DIAGNOSTIC OR THERAPEUTIC PROCEDURES'.