

EP300 Antibody (monoclonal) (M02)

Mouse monoclonal antibody raised against a partial recombinant EP300.

Catalog # AT1920a

Product Information

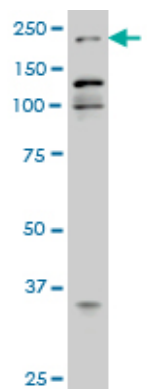
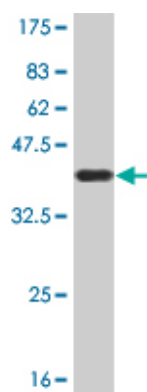
Application	WB, IHC, IF, E
Primary Accession	Q09472
Other Accession	NM_001429
Reactivity	Human
Host	Mouse
Clonality	monoclonal
Isotype	IgG1
Clone Names	1D2
Calculated MW	264161

Additional Information

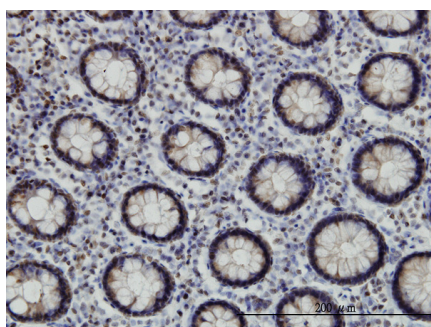
Gene ID	2033
Other Names	Histone acetyltransferase p300, p300 HAT, E1A-associated protein p300, EP300, P300
Target/Specificity	EP300 (NP_001420, 731 a.a. ~ 830 a.a) partial recombinant protein with GST tag. MW of the GST tag alone is 26 KDa.
Dilution	WB~~1:500~1000 IHC~~1:100~500 IF~~1:50~200 E~~N/A
Format	Clear, colorless solution in phosphate buffered saline, pH 7.2 .
Storage	Store at -20°C or lower. Aliquot to avoid repeated freezing and thawing.
Precautions	EP300 Antibody (monoclonal) (M02) is for research use only and not for use in diagnostic or therapeutic procedures.

Images

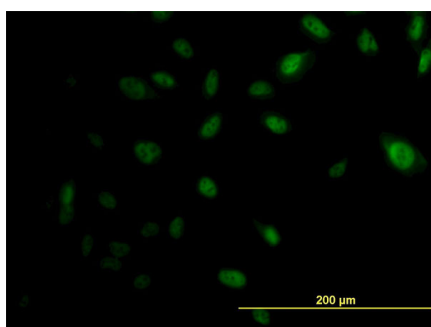
Antibody Reactive Against Recombinant Protein.Western Blot detection against Immunogen (36.74 KDa) .



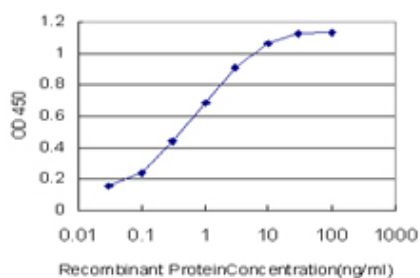
EP300 monoclonal antibody (M02), clone 1D2 Western Blot analysis of EP300 expression in HeLa S3 NE (Cat # AT1920a)



Immunoperoxidase of monoclonal antibody to EP300 on formalin-fixed paraffin-embedded human colon. [antibody concentration 3 ug/ml]



Immunofluorescence of monoclonal antibody to EP300 on HeLa cell. [antibody concentration 10 ug/ml]



Detection limit for recombinant GST tagged EP300 is approximately 0.03ng/ml as a capture antibody.