

EPB41L3 Antibody (monoclonal) (M01)

Mouse monoclonal antibody raised against a partial recombinant EPB41L3.

Catalog # AT1923a

Product Information

Application	WB, E
Primary Accession	Q9Y2J2
Other Accession	NM_012307
Reactivity	Human
Host	mouse
Clonality	monoclonal
Isotype	IgG2a Kappa
Clone Names	2B1
Calculated MW	120678

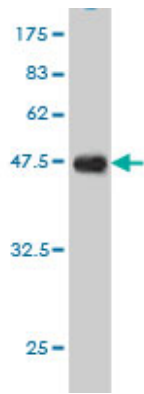
Additional Information

Gene ID	23136
Other Names	Band 41-like protein 3, 41B, Differentially expressed in adenocarcinoma of the lung protein 1, DAL-1, Band 41-like protein 3, N-terminally processed, EPB41L3, DAL1, KIAA0987
Target/Specificity	EPB41L3 (NP_036439, 915 a.a. ~ 1007 a.a) partial recombinant protein with GST tag. MW of the GST tag alone is 26 KDa.
Dilution	WB~~1:500~1000 E~~N/A
Format	Clear, colorless solution in phosphate buffered saline, pH 7.2 .
Storage	Store at -20°C or lower. Aliquot to avoid repeated freezing and thawing.
Precautions	EPB41L3 Antibody (monoclonal) (M01) is for research use only and not for use in diagnostic or therapeutic procedures.

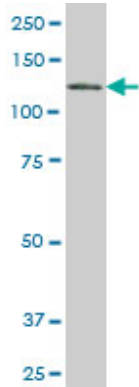
References

1.The tale of two domains: Proteomic and genomic analysis of SMYD2, a new histone methyltransferase.Abu-Farha M, Lambert JP, Al-Madhoun AS, Elisma F, Skerjanc IS, Figeys D.Mol Cell Proteomics. 2008 Mar;7(3):560-72. Epub 2007 Dec 7.

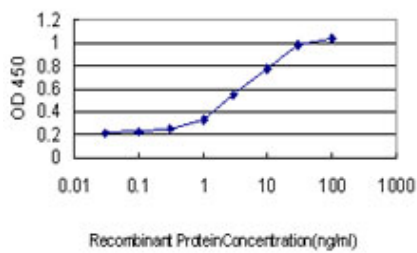
Images



Blot detection against Immunogen (35.97 KDa) .



EPB41L3 monoclonal antibody (M01), clone 2B1 Western Blot analysis of EPB41L3 expression in HepG2 ((Cat # AT1923a)



Detection limit for recombinant GST tagged EPB41L3 is approximately 0.1ng/ml as a capture antibody.

Please note: All products are 'FOR RESEARCH USE ONLY. NOT FOR USE IN DIAGNOSTIC OR THERAPEUTIC PROCEDURES'.