

EPHA2 Antibody (monoclonal) (M02)

Mouse monoclonal antibody raised against a partial recombinant EPHA2.

Catalog # AT1925a

Product Information

Application	WB, IF
Primary Accession	P29317
Other Accession	BC037166
Reactivity	Human
Host	mouse
Clonality	monoclonal
Isotype	IgG3 Kappa
Clone Names	1E4
Calculated MW	108266

Additional Information

Gene ID	1969
Other Names	Ephrin type-A receptor 2, Epithelial cell kinase, Tyrosine-protein kinase receptor ECK, EPHA2, ECK
Target/Specificity	EPHA2 (AAH37166, 204 a.a. ~ 326 a.a) partial recombinant protein with GST tag. MW of the GST tag alone is 26 KDa.
Dilution	WB~~1:500~1000 IF~~1:50~200
Format	Clear, colorless solution in phosphate buffered saline, pH 7.2 .
Storage	Store at -20°C or lower. Aliquot to avoid repeated freezing and thawing.
Precautions	EPHA2 Antibody (monoclonal) (M02) is for research use only and not for use in diagnostic or therapeutic procedures.

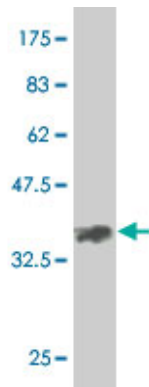
Background

This gene belongs to the ephrin receptor subfamily of the protein-tyrosine kinase family. EPH and EPH-related receptors have been implicated in mediating developmental events, particularly in the nervous system. Receptors in the EPH subfamily typically have a single kinase domain and an extracellular region containing a Cys-rich domain and 2 fibronectin type III repeats. The ephrin receptors are divided into 2 groups based on the similarity of their extracellular domain sequences and their affinities for binding ephrin-A and ephrin-B ligands. This gene encodes a protein that binds ephrin-A ligands. Mutations in this gene are the cause of certain genetically-related cataract disorders.

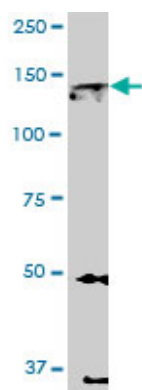
References

Ephexin4 and EphA2 mediate cell migration through a RhoG-dependent mechanism. Hiramoto-Yamaki N, et al. J Cell Biol, 2010 Aug 9. PMID 20679435. EphA2 targeted chemotherapy using an antibody drug conjugate in endometrial carcinoma. Lee JW, et al. Clin Cancer Res, 2010 May 1. PMID 20388851. Autosomal recessive congenital cataract linked to EPHA2 in a consanguineous Pakistani family. Kaul H, et al. Mol Vis, 2010 Mar 24. PMID 20361013. EphA2 mutation in lung squamous cell carcinoma promotes increased cell survival, cell invasion, focal adhesions, and mammalian target of rapamycin activation. Faoro L, et al. J Biol Chem, 2010 Jun 11. PMID 20360610. An extracellular steric seeding mechanism for Eph-ephrin signaling platform assembly. Seiradake E, et al. Nat Struct Mol Biol, 2010 Apr. PMID 20228801.

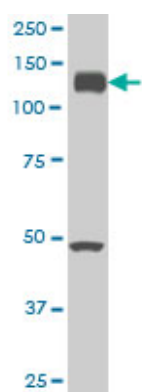
Images



Antibody Reactive Against Recombinant Protein. Western Blot detection against Immunogen (39.16 KDa) .

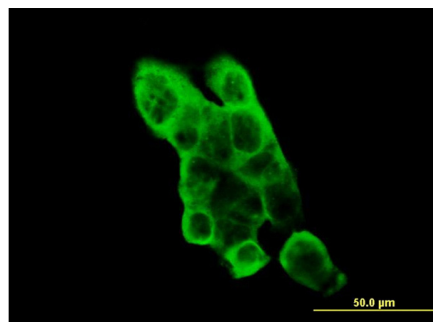
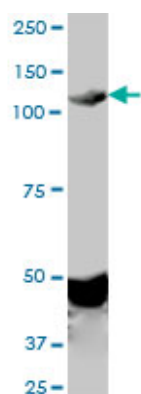


EPHA2 monoclonal antibody (M02), clone 1E3. Western Blot analysis of EPHA2 expression in U-2 OS ((Cat # AT1925a)



EPHA2 monoclonal antibody (M02), clone 1E3 Western Blot analysis of EPHA2 expression in A-431 ((Cat # AT1925a)

EPHA2 monoclonal antibody (M02), clone 1E3. Western Blot analysis of EPHA2 expression in Jurkat ((Cat # AT1925a)



Immunofluorescence of monoclonal antibody to EPHA2 on A-431 cell. [antibody concentration 10 ug/ml]

Please note: All products are 'FOR RESEARCH USE ONLY. NOT FOR USE IN DIAGNOSTIC OR THERAPEUTIC PROCEDURES'.