

EPHA6 Antibody (monoclonal) (M01)

Mouse monoclonal antibody raised against a partial recombinant EPHA6.

Catalog # AT1926a

Product Information

Application	WB
Primary Accession	Q9UF33
Other Accession	XM_114973
Reactivity	Human
Host	mouse
Clonality	monoclonal
Isotype	IgG1 kappa
Clone Names	2H2
Calculated MW	116379

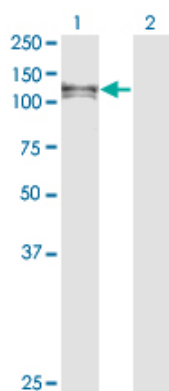
Additional Information

Gene ID	285220
Other Names	Ephrin type-A receptor 6, EPH homology kinase 2, EHK-2, EPH-like kinase 12, EK12, EPHA6, EHK2, HEK12
Target/Specificity	EPHA6 (XP_114973, 613 a.a. ~ 712 a.a) partial recombinant protein with GST tag. MW of the GST tag alone is 26 KDa.
Dilution	WB~~1:500~1000
Format	Clear, colorless solution in phosphate buffered saline, pH 7.2 .
Storage	Store at -20°C or lower. Aliquot to avoid repeated freezing and thawing.
Precautions	EPHA6 Antibody (monoclonal) (M01) is for research use only and not for use in diagnostic or therapeutic procedures.

Images

Western Blot analysis of EPHA6 expression in transfected 293T cell line by EPHA6 monoclonal antibody (M01), clone 2H2.

Lane 1: EPHA6 transfected lysate(113.96 KDa).
Lane 2: Non-transfected lysate.



Please note: All products are 'FOR RESEARCH USE ONLY. NOT FOR USE IN DIAGNOSTIC OR THERAPEUTIC PROCEDURES'.