

EPM2AIP1 Antibody (monoclonal) (M01)

Mouse monoclonal antibody raised against a partial recombinant EPM2AIP1.

Catalog # AT1928a

Product Information

Application	WB, E
Primary Accession	Q7L775
Other Accession	NM_014805
Reactivity	Human, Mouse, Rat
Host	mouse
Clonality	monoclonal
Isotype	IgG2b Kappa
Clone Names	3H7
Calculated MW	70370

Additional Information

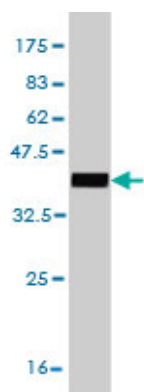
Gene ID	9852
Other Names	EPM2A-interacting protein 1, Laforin-interacting protein, EPM2AIP1, KIAA0766
Target/Specificity	EPM2AIP1 (NP_055620, 508 a.a. ~ 606 a.a) partial recombinant protein with GST tag. MW of the GST tag alone is 26 KDa.
Dilution	WB~~1:500~1000 E~~N/A
Format	Clear, colorless solution in phosphate buffered saline, pH 7.2 .
Storage	Store at -20°C or lower. Aliquot to avoid repeated freezing and thawing.
Precautions	EPM2AIP1 Antibody (monoclonal) (M01) is for research use only and not for use in diagnostic or therapeutic procedures.

Background

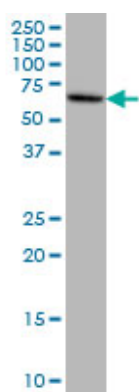
The EPM2A gene, which encodes laforin, is mutated in an autosomal recessive form of adolescent progressive myoclonus epilepsy. The protein encoded by this gene binds to laforin, but its function is not known. This gene is intronless.

References

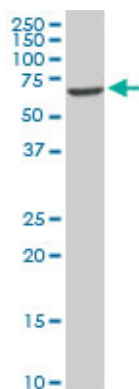
1. Deficiency of a Glycogen Synthase-associated Protein, Epm2aip1, Causes Decreased Glycogen Synthesis and Hepatic Insulin Resistance. Turnbull J, Tiberia E, Pereira S, Zhao X, Pencea N, Wheeler AL, Yu WQ, Ivovic A, Naranian T, Israelian N, Draginov A, Piliguian M, Frankland PW, Wang P, Ackerley CA, Giacca A, Minassian BAJ Biol Chem. 2013 Nov 29;288(48):34627-37. doi: 10.1074/jbc.M113.483198. Epub 2013 Oct 18.



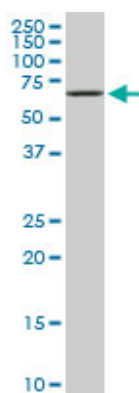
Antibody Reactive Against Recombinant Protein. Western Blot detection against Immunogen (36.63 KDa) .



EPM2AIP1 monoclonal antibody (M01), clone 3H7
Western Blot analysis of EPM2AIP1 expression in HeLa (Cat # AT1928a)

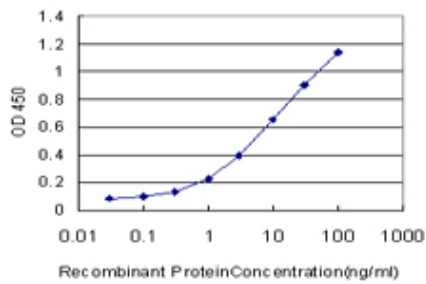
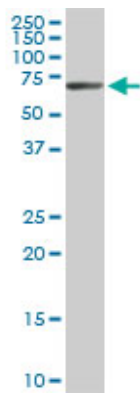


EPM2AIP1 monoclonal antibody (M01), clone 3H7.
Western Blot analysis of EPM2AIP1 expression in PC-12((Cat # AT1928a)



EPM2AIP1 monoclonal antibody (M01), clone 3H7.
Western Blot analysis of EPM2AIP1 expression in Raw 264.7((Cat # AT1928a)

EPM2AIP1 monoclonal antibody (M01), clone 3H7.
Western Blot analysis of EPM2AIP1 expression in NIH/3T3((Cat # AT1928a)



Detection limit for recombinant GST tagged EPM2AIP1 is approximately 0.03ng/ml as a capture antibody.

Please note: All products are 'FOR RESEARCH USE ONLY. NOT FOR USE IN DIAGNOSTIC OR THERAPEUTIC PROCEDURES'.