

EPSTI1 Antibody (monoclonal) (M01)

Mouse monoclonal antibody raised against a partial recombinant EPSTI1.

Catalog # AT1934a

Product Information

Application	WB, IHC, E
Primary Accession	Q96J88
Other Accession	NM_001002264
Reactivity	Human
Host	mouse
Clonality	monoclonal
Isotype	IgG1 Kappa
Clone Names	2A8
Calculated MW	36793

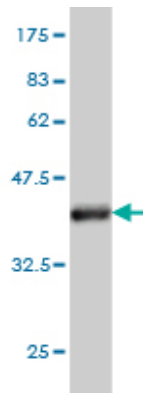
Additional Information

Gene ID	94240
Other Names	Epithelial-stromal interaction protein 1, EPSTI1
Target/Specificity	EPSTI1 (NP_001002264, 1 a.a. ~ 100 a.a) partial recombinant protein with GST tag. MW of the GST tag alone is 26 KDa.
Dilution	WB~~1:500~1000 IHC~~1:100~500 E~~N/A
Format	Clear, colorless solution in phosphate buffered saline, pH 7.2 .
Storage	Store at -20°C or lower. Aliquot to avoid repeated freezing and thawing.
Precautions	EPSTI1 Antibody (monoclonal) (M01) is for research use only and not for use in diagnostic or therapeutic procedures.

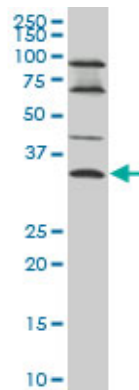
References

Epithelial-stromal interaction 1 (EPSTI1) substitutes for peritumoral fibroblasts in the tumor microenvironment. de Neergaard M, et al. Am J Pathol, 2010 Mar. PMID 20133812. Generation and initial analysis of more than 15,000 full-length human and mouse cDNA sequences. Strausberg RL, et al. Proc Natl Acad Sci U S A, 2002 Dec 24. PMID 12477932. Identification of EPSTI1, a novel gene induced by epithelial-stromal interaction in human breast cancer. Nielsen HL, et al. Genomics, 2002 May. PMID 11991720. Initial assessment of human gene diversity and expression patterns based upon 83 million nucleotides of cDNA sequence. Adams MD, et al. Nature, 1995 Sep 28. PMID 7566098.

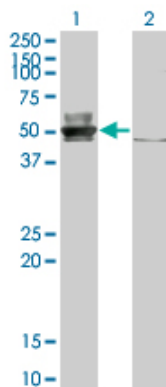
Images



Antibody Reactive Against Recombinant Protein. Western Blot detection against Immunogen (36.74 KDa) .

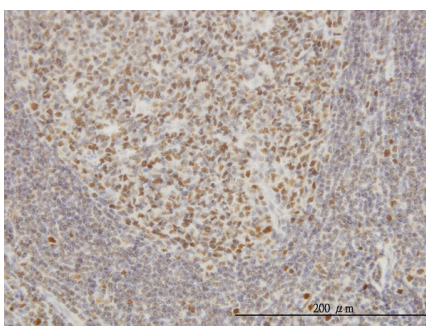


EPSTI1 monoclonal antibody (M01), clone 2A8 Western Blot analysis of EPSTI1 expression in A-431((Cat # AT1934a)

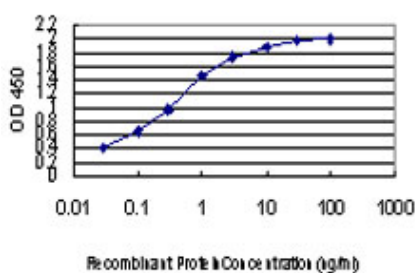


Western Blot analysis of EPSTI1 expression in transfected 293T cell line by EPSTI1 monoclonal antibody (M01), clone 2A8.

Lane 1: EPSTI1 transfected lysate(36.793 KDa).
Lane 2: Non-transfected lysate.



Immunoperoxidase of monoclonal antibody to EPSTI1 on formalin-fixed paraffin-embedded human tonsil. [antibody concentration 3 ug/ml]



Detection limit for recombinant GST tagged EPSTI1 is approximately 0.03ng/ml as a capture antibody.

Citations

- [Contrasting functions of the epithelial-stromal interaction 1 gene in human oral and lung squamous cell cancers](#)

Please note: All products are 'FOR RESEARCH USE ONLY. NOT FOR USE IN DIAGNOSTIC OR THERAPEUTIC PROCEDURES'.