

## ERCC2 Antibody (monoclonal) (M01)

Mouse monoclonal antibody raised against a full length recombinant ERCC2.

Catalog # AT1937a

### Product Information

---

<b>Application</b>	WB
<b>Primary Accession</b>	<a href="#">P18074</a>
<b>Other Accession</b>	<a href="#">BC008346</a>
<b>Reactivity</b>	Human
<b>Host</b>	mouse
<b>Clonality</b>	monoclonal
<b>Isotype</b>	IgG1 kappa
<b>Clone Names</b>	4G2-2A6
<b>Calculated MW</b>	86909

### Additional Information

---

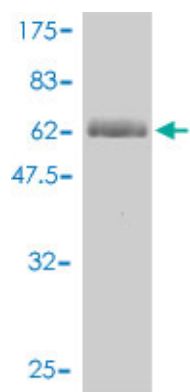
<b>Gene ID</b>	2068
<b>Other Names</b>	TFIIH basal transcription factor complex helicase XPD subunit, Basic transcription factor 2 80 kDa subunit, BTF2 p80, CXPB, DNA excision repair protein ERCC-2, DNA repair protein complementing XP-D cells, TFIIH basal transcription factor complex 80 kDa subunit, TFIIH 80 kDa subunit, TFIIH p80, Xeroderma pigmentosum group D-complementing protein, ERCC2, XPD, XPB
<b>Target/Specificity</b>	ERCC2 (AAH08346, 1 a.a. ~ 405 a.a) full-length recombinant protein with GST tag. MW of the GST tag alone is 26 kDa.
<b>Dilution</b>	WB~~1:500~1000
<b>Format</b>	Clear, colorless solution in phosphate buffered saline, pH 7.2 .
<b>Storage</b>	Store at -20°C or lower. Aliquot to avoid repeated freezing and thawing.
<b>Precautions</b>	ERCC2 Antibody (monoclonal) (M01) is for research use only and not for use in diagnostic or therapeutic procedures.

### Background

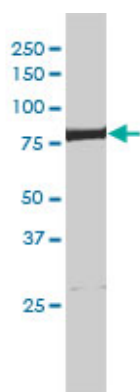
---

The nucleotide excision repair pathway is a mechanism to repair damage to DNA. The protein encoded by this gene is involved in transcription-coupled nucleotide excision repair and is an integral member of the basal transcription factor BTF2/TFIIH complex. The gene product has ATP-dependent DNA helicase activity and belongs to the RAD3/XPD subfamily of helicases. Defects in this gene can result in three different disorders, the cancer-prone syndrome xeroderma pigmentosum complementation group D, trichothiodystrophy, and Cockayne syndrome. Alternatively spliced transcript variants encoding different isoforms have been found for this gene. [provided by RefSeq]

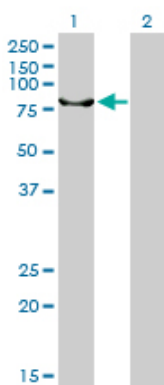
## Images



Antibody Reactive Against Recombinant Protein. Western Blot detection against Immunogen (70.29 KDa) .



ERCC2 monoclonal antibody (M01), clone 4G2-2A6  
Western Blot analysis of ERCC2 expression in HeLa S3 NE (Cat # AT1937a )



Western Blot analysis of ERCC2 expression in transfected 293T cell line by ERCC2 monoclonal antibody (M01), clone 4G2-2A6.

Lane 1: ERCC2 transfected lysate (86.9 KDa).  
Lane 2: Non-transfected lysate.

Please note: All products are 'FOR RESEARCH USE ONLY. NOT FOR USE IN DIAGNOSTIC OR THERAPEUTIC PROCEDURES'.