

ERCC2 Antibody (monoclonal) (M04)

Mouse monoclonal antibody raised against a full-length recombinant ERCC2.

Catalog # AT1938a

Product Information

Application	WB, IF
Primary Accession	P18074
Other Accession	BC008346
Reactivity	Human
Host	mouse
Clonality	monoclonal
Isotype	IgG1 Kappa
Clone Names	S3
Calculated MW	86909

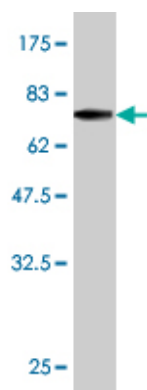
Additional Information

Gene ID	2068
Other Names	TFIIH basal transcription factor complex helicase XPD subunit, Basic transcription factor 2 80 kDa subunit, BTF2 p80, CXPB, DNA excision repair protein ERCC-2, DNA repair protein complementing XP-D cells, TFIIH basal transcription factor complex 80 kDa subunit, TFIIH 80 kDa subunit, TFIIH p80, Xeroderma pigmentosum group D-complementing protein, ERCC2, XPD, XPB
Target/Specificity	ERCC2 (AAH08346, 1 a.a. ~ 405 a.a) full-length recombinant protein with GST tag. MW of the GST tag alone is 26 kDa.
Dilution	WB~~1:500~1000 IF~~1:50~200
Format	Clear, colorless solution in phosphate buffered saline, pH 7.2 .
Storage	Store at -20°C or lower. Aliquot to avoid repeated freezing and thawing.
Precautions	ERCC2 Antibody (monoclonal) (M04) is for research use only and not for use in diagnostic or therapeutic procedures.

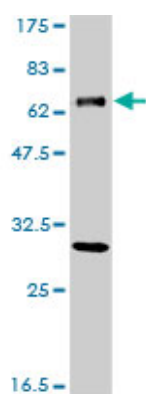
Background

The nucleotide excision repair pathway is a mechanism to repair damage to DNA. The protein encoded by this gene is involved in transcription-coupled nucleotide excision repair and is an integral member of the basal transcription factor BTF2/TFIIH complex. The gene product has ATP-dependent DNA helicase activity and belongs to the RAD3/XPD subfamily of helicases. Defects in this gene can result in three different disorders, the cancer-prone syndrome xeroderma pigmentosum complementation group D, trichothiodystrophy, and Cockayne syndrome. Alternatively spliced transcript variants encoding different isoforms have been found for this gene. [provided by RefSeq]

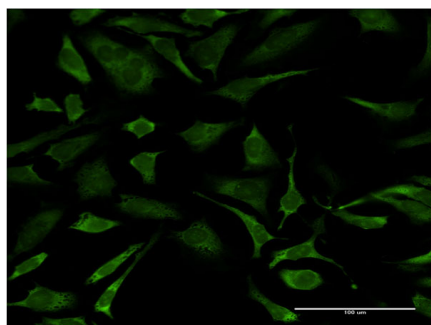
Images



Antibody Reactive Against Recombinant Protein. Western Blot detection against Immunogen (70.29 KDa) .



ERCC2 monoclonal antibody (M01), clone S3 Western Blot analysis of ERCC2 expression in A-431 ((Cat # AT1938a)



Immunofluorescence of monoclonal antibody to ERCC2 on HeLa cell . [antibody concentration 10 ug/ml]

Please note: All products are 'FOR RESEARCH USE ONLY. NOT FOR USE IN DIAGNOSTIC OR THERAPEUTIC PROCEDURES'.