

ERH Antibody (monoclonal) (M07)

Mouse monoclonal antibody raised against a full length recombinant ERH.

Catalog # AT1941a

Product Information

Application	WB, E
Primary Accession	P84090
Other Accession	BC014301
Reactivity	Human
Host	mouse
Clonality	monoclonal
Isotype	IgG1 Kappa
Clone Names	1H4
Calculated MW	12259

Additional Information

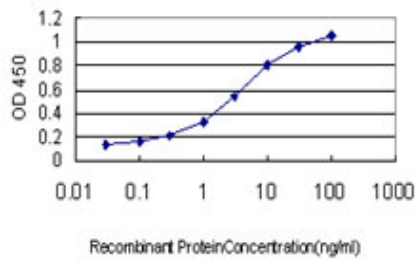
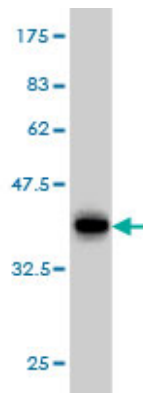
Gene ID	2079
Other Names	Enhancer of rudimentary homolog, ERH
Target/Specificity	ERH (AAH14301, 1 a.a. ~ 104 a.a) full-length recombinant protein with GST tag. MW of the GST tag alone is 26 KDa.
Dilution	WB~~1:500~1000 E~~N/A
Format	Clear, colorless solution in phosphate buffered saline, pH 7.2 .
Storage	Store at -20°C or lower. Aliquot to avoid repeated freezing and thawing.
Precautions	ERH Antibody (monoclonal) (M07) is for research use only and not for use in diagnostic or therapeutic procedures.

References

1.A genotoxic stress-responsive miRNA, miR-574-3p, delays cell growth by suppressing the enhancer of rudimentary homolog gene in vitro.Ishikawa K, Ishikawa A, Shoji Y, Imai TInt J Mol Sci. 2014 Feb 20;15(2):2971-90. doi: 10.3390/ijms15022971.

Images

Antibody Reactive Against Recombinant Protein.Western Blot detection against Immunogen (37.18 KDa) .



Detection limit for recombinant GST tagged ERH is approximately 0.03ng/ml as a capture antibody.

Please note: All products are 'FOR RESEARCH USE ONLY. NOT FOR USE IN DIAGNOSTIC OR THERAPEUTIC PROCEDURES'.