

ERO1L Antibody (monoclonal) (M01)

Mouse monoclonal antibody raised against a partial recombinant ERO1L.

Catalog # AT1946a

Product Information

Application	WB, IHC, E
Primary Accession	Q96HE7
Other Accession	NM_014584
Reactivity	Human, Rat
Host	mouse
Clonality	monoclonal
Isotype	IgG2b Kappa
Clone Names	4G3
Calculated MW	54393

Additional Information

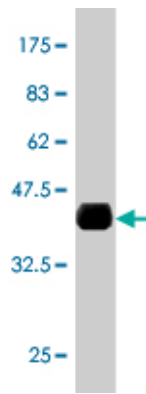
Gene ID	30001
Other Names	ERO1-like protein alpha, ERO1-L, ERO1-L-alpha, 184-, Endoplasmic oxidoreductin-1-like protein, Oxidoreductin-1-L-alpha, ERO1L
Target/Specificity	ERO1L (NP_055399, 90 a.a. ~ 178 a.a) partial recombinant protein with GST tag. MW of the GST tag alone is 26 KDa.
Dilution	WB~~1:500~1000 IHC~~1:100~500 E~~N/A
Format	Clear, colorless solution in phosphate buffered saline, pH 7.2 .
Storage	Store at -20°C or lower. Aliquot to avoid repeated freezing and thawing.
Precautions	ERO1L Antibody (monoclonal) (M01) is for research use only and not for use in diagnostic or therapeutic procedures.

References

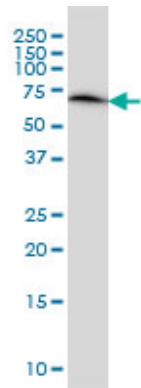
1.Ero1-? and PDIs constitute a hierarchical electron transfer network of endoplasmic reticulum oxidoreductases.Araki K, Iemura S, Kamiya Y, Ron D, Kato K, Natsume T, Nagata K.J Cell Biol. 2013 Sep 16;202(6):861-74.

Images

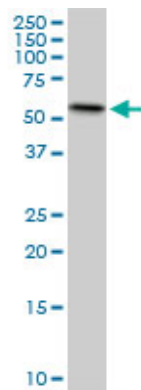
Antibody Reactive Against Recombinant Protein.Western Blot detection against Immunogen (35.53 KDa) .



ERO1L monoclonal antibody (M01), clone 4G3 Western Blot analysis of ERO1L expression in HeLa (Cat # AT1946a)

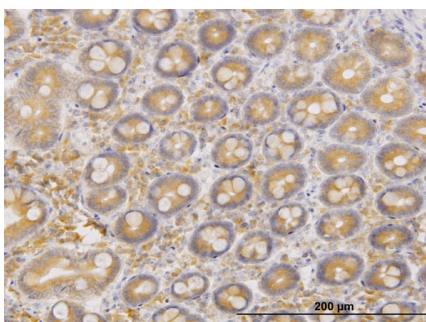
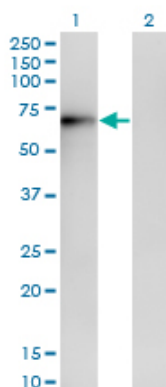


ERO1L monoclonal antibody (M01), clone 4G3. Western Blot analysis of ERO1L expression in PC-12 (Cat # AT1946a)

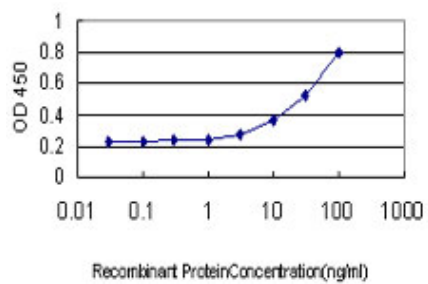


Western Blot analysis of ERO1L expression in transfected 293T cell line by ERO1L monoclonal antibody (M01), clone 4G3.

Lane 1: ERO1L transfected lysate(54 KDa).
Lane 2: Non-transfected lysate.



Immunoperoxidase of monoclonal antibody to ERO1L on formalin-fixed paraffin-embedded human small Intestine. [antibody concentration 1.5 ug/ml]



Detection limit for recombinant GST tagged ERO1L is approximately 3ng/ml as a capture antibody.

Please note: All products are 'FOR RESEARCH USE ONLY. NOT FOR USE IN DIAGNOSTIC OR THERAPEUTIC PROCEDURES'.