

## ETV5 Antibody (monoclonal) (M01)

Mouse monoclonal antibody raised against a partial recombinant ETV5.

Catalog # AT1954a

### Product Information

---

Application	WB, E
Primary Accession	<a href="#">P41161</a>
Other Accession	<a href="#">NM_004454</a>
Reactivity	Human
Host	mouse
Clonality	monoclonal
Isotype	IgG1 Kappa
Clone Names	3B10
Calculated MW	57838

### Additional Information

---

Gene ID	2119
Other Names	ETS translocation variant 5, Ets-related protein ERM, ETV5, ERM
Target/Specificity	ETV5 (NP_004445, 181 a.a. ~ 290 a.a) partial recombinant protein with GST tag. MW of the GST tag alone is 26 KDa.
Dilution	WB~~1:500~1000 E~~N/A
Format	Clear, colorless solution in phosphate buffered saline, pH 7.2 .
Storage	Store at -20°C or lower. Aliquot to avoid repeated freezing and thawing.
Precautions	ETV5 Antibody (monoclonal) (M01) is for research use only and not for use in diagnostic or therapeutic procedures.

### References

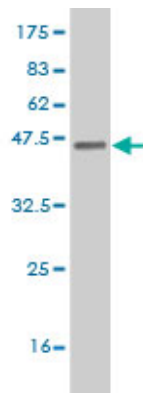
---

1.Characterization of TMPRSS2:ETV5 and SLC45A3:ETV5 gene fusions in prostate cancer.Helgeson BE, Tomlins SA, Shah N, Laxman B, Cao Q, Prensner JR, Cao X, Singla N, Montie JE, Varambally S, Mehra R, Chinnaiyan AM.Cancer Res. 2008 Jan 1;68(1):73-80.

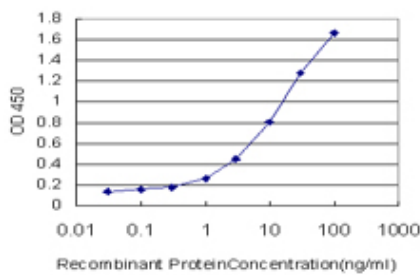
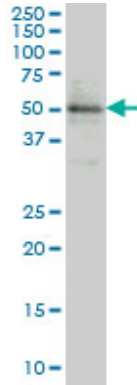
### Images

---

Antibody Reactive Against Recombinant Protein.Western Blot detection against Immunogen (37.84 KDa) .



ETV5 monoclonal antibody (M01), clone 3B10 Western Blot analysis of ETV5 expression in HeLa S3 NE (Cat # AT1954a)



Detection limit for recombinant GST tagged ETV5 is approximately 0.3ng/ml as a capture antibody.

Please note: All products are 'FOR RESEARCH USE ONLY. NOT FOR USE IN DIAGNOSTIC OR THERAPEUTIC PROCEDURES'.