

EVI2B Antibody (monoclonal) (M02)

Mouse monoclonal antibody raised against a partial recombinant EVI2B.

Catalog # AT1957a

Product Information

Application	WB, E
Primary Accession	P34910
Other Accession	NM_006495
Reactivity	Human
Host	mouse
Clonality	monoclonal
Isotype	IgG2b Kappa
Clone Names	2G9
Calculated MW	48666

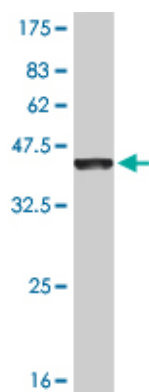
Additional Information

Gene ID	2124
Other Names	Protein EVI2B, Ecotropic viral integration site 2B protein homolog, EVI-2B, CD361, EVI2B, EVDB
Target/Specificity	EVI2B (NP_006486, 23 a.a. ~ 121 a.a) partial recombinant protein with GST tag. MW of the GST tag alone is 26 KDa.
Dilution	WB~~1:500~1000 E~~N/A
Format	Clear, colorless solution in phosphate buffered saline, pH 7.2 .
Storage	Store at -20°C or lower. Aliquot to avoid repeated freezing and thawing.
Precautions	EVI2B Antibody (monoclonal) (M02) is for research use only and not for use in diagnostic or therapeutic procedures.

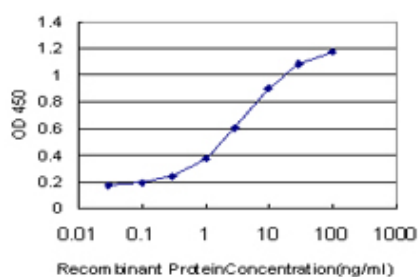
References

Toward a confocal subcellular atlas of the human proteome. Barbe L, et al. Mol Cell Proteomics, 2008 Mar. PMID 18029348. Mutations in RNF135, a gene within the NF1 microdeletion region, cause phenotypic abnormalities including overgrowth. Douglas J, et al. Nat Genet, 2007 Aug. PMID 17632510. Diversification of transcriptional modulation: large-scale identification and characterization of putative alternative promoters of human genes. Kimura K, et al. Genome Res, 2006 Jan. PMID 16344560. Generation and initial analysis of more than 15,000 full-length human and mouse cDNA sequences. Strausberg RL, et al. Proc Natl Acad Sci U S A, 2002 Dec 24. PMID 12477932. Identification and characterization of transcripts from the neurofibromatosis 1 region: the sequence and genomic structure of EVI2 and mapping of other transcripts. Cawthon RM, et al. Genomics, 1990 Aug. PMID 2117566.

Images



Antibody Reactive Against Recombinant Protein. Western Blot detection against Immunogen (36.63 KDa) .



Detection limit for recombinant GST tagged EVI2B is approximately 0.1 ng/ml as a capture antibody.

Please note: All products are 'FOR RESEARCH USE ONLY. NOT FOR USE IN DIAGNOSTIC OR THERAPEUTIC PROCEDURES'.