

## EXO1 Antibody (monoclonal) (M01)

Mouse monoclonal antibody raised against a partial recombinant EXO1.

Catalog # AT1962a

### Product Information

---

<b>Application</b>	WB
<b>Primary Accession</b>	<a href="#">Q9UQ84</a>
<b>Other Accession</b>	<a href="#">BC007491</a>
<b>Reactivity</b>	Human
<b>Host</b>	mouse
<b>Clonality</b>	monoclonal
<b>Isotype</b>	IgG1 Kappa
<b>Clone Names</b>	1G12
<b>Calculated MW</b>	94103

### Additional Information

---

<b>Gene ID</b>	9156
<b>Other Names</b>	Exonuclease 1, hExo1, 31--, Exonuclease I, hExoI, EXO1, EXOI, HEX1
<b>Target/Specificity</b>	EXO1 (AAH07491, 747 a.a. ~ 846 a.a) partial recombinant protein with GST tag. MW of the GST tag alone is 26 KDa.
<b>Dilution</b>	WB~~1:500~1000
<b>Format</b>	Clear, colorless solution in phosphate buffered saline, pH 7.2 .
<b>Storage</b>	Store at -20°C or lower. Aliquot to avoid repeated freezing and thawing.
<b>Precautions</b>	EXO1 Antibody (monoclonal) (M01) is for research use only and not for use in diagnostic or therapeutic procedures.

### Background

---

This gene encodes a protein with 5' to 3' exonuclease activity as well as an RNase H activity. It is similar to the *Saccharomyces cerevisiae* protein Exo1 which interacts with Msh2 and which is involved in mismatch repair and recombination. Alternative splicing of this gene results in three transcript variants encoding two different isoforms.

### References

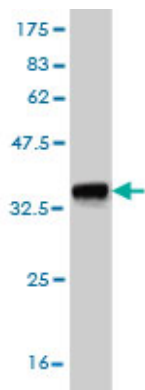
---

A Large-scale genetic association study of esophageal adenocarcinoma risk. Liu CY, et al. Carcinogenesis, 2010 Jul. PMID 20453000.Delineation of WRN helicase function with EXO1 in the replicational stress response. Aggarwal M, et al. DNA Repair (Amst), 2010 Jul 1. PMID 20447876.Personalized smoking cessation:

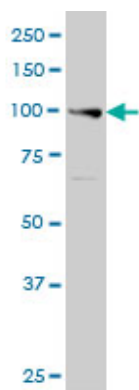
interactions between nicotine dose, dependence and quit-success genotype score. Rose JE, et al. Mol Med, 2010 Jul-Aug. PMID 20379614. Single-nucleotide polymorphism of the Exo1 gene: association with gastric cancer susceptibility and interaction with smoking in Taiwan. Bau DT, et al. Chin J Physiol, 2009 Dec 31. PMID 20337148. Distinct activities of exonuclease 1 and flap endonuclease 1 at telomeric g4 DNA. Vallur AC, et al. PLoS One, 2010 Jan 26. PMID 20126648.

## Images

---



Antibody Reactive Against Recombinant Protein. Western Blot detection against Immunogen (36.63 KDa) .



EXO1 monoclonal antibody (M01), clone 1G12 Western Blot analysis of EXO1 expression in A-431 (Cat # AT1962a )

Please note: All products are 'FOR RESEARCH USE ONLY. NOT FOR USE IN DIAGNOSTIC OR THERAPEUTIC PROCEDURES'.