

EXT1 Antibody (monoclonal) (M01)

Mouse monoclonal antibody raised against a partial recombinant EXT1.

Catalog # AT1970a

Product Information

Application	WB, E
Primary Accession	Q16394
Other Accession	BC001174
Reactivity	Human
Host	mouse
Clonality	monoclonal
Isotype	IgG2a kappa
Clone Names	5A5
Calculated MW	86255

Additional Information

Gene ID	2131
Other Names	Exostosin-1, Glucuronosyl-N-acetylglucosaminyl-proteoglycan/N-acetylglucosaminyl-proteoglycan 4-alpha-N-acetylglucosaminyltransferase, Multiple exostoses protein 1, Putative tumor suppressor protein EXT1, EXT1
Target/Specificity	EXT1 (AAH01174, 246 a.a. ~ 345 a.a) partial recombinant protein with GST tag. MW of the GST tag alone is 26 KDa.
Dilution	WB~~1:500~1000 E~~N/A
Format	Clear, colorless solution in phosphate buffered saline, pH 7.2 .
Storage	Store at -20°C or lower. Aliquot to avoid repeated freezing and thawing.
Precautions	EXT1 Antibody (monoclonal) (M01) is for research use only and not for use in diagnostic or therapeutic procedures.

Background

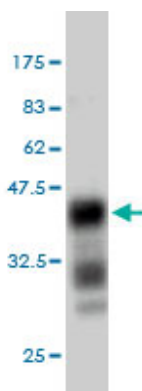
This gene encodes an endoplasmic reticulum-resident type II transmembrane glycosyltransferase involved in the chain elongation step of heparan sulfate biosynthesis. Mutations in this gene cause the type I form of multiple exostoses.

References

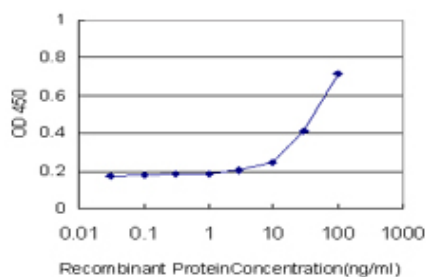
Osteopoikilosis and multiple exostoses caused by novel mutations in LEMD3 and EXT1 genes respectively--coincidence within one family. Baasanjav S, et al. BMC Med Genet, 2010 Jul 9. PMID

20618940.Genetic models of osteochondroma onset and neoplastic progression: evidence for mechanisms alternative to EXT genes inactivation. Zuntini M, et al. *Oncogene*, 2010 Jul 1. PMID 20418910.A novel EXT1 gene mutation causing hereditary multiple exostoses in a Chinese pedigree. Li Y, et al. *Pathology*, 2010 Jan. PMID 20025490.Identification of 15 loci influencing height in a Korean population. Kim JJ, et al. *J Hum Genet*, 2010 Jan. PMID 19893584.Identification of four novel EXT1 and EXT2 mutations in five Chinese pedigrees with hereditary multiple exostoses. Li Y, et al. *Genet Test Mol Biomarkers*, 2009 Dec. PMID 19839753.

Images



Antibody Reactive Against Recombinant Protein.Western Blot detection against Immunogen (36.63 KDa) .



Detection limit for recombinant GST tagged EXT1 is approximately 3ng/ml as a capture antibody.

Please note: All products are 'FOR RESEARCH USE ONLY. NOT FOR USE IN DIAGNOSTIC OR THERAPEUTIC PROCEDURES'.