

## F2 Antibody (monoclonal) (M01)

Mouse monoclonal antibody raised against a partial recombinant F2.

Catalog # AT1977a

### Product Information

---

<b>Application</b>	WB, IP, E
<b>Primary Accession</b>	<a href="#">P00734</a>
<b>Other Accession</b>	<a href="#">BC051332</a>
<b>Reactivity</b>	Human
<b>Host</b>	mouse
<b>Clonality</b>	monoclonal
<b>Isotype</b>	IgG
<b>Clone Names</b>	1B7
<b>Calculated MW</b>	70037

### Additional Information

---

<b>Gene ID</b>	2147
<b>Other Names</b>	Prothrombin, Coagulation factor II, Activation peptide fragment 1, Activation peptide fragment 2, Thrombin light chain, Thrombin heavy chain, F2
<b>Target/Specificity</b>	F2 (AAH51332, 263 a.a. ~ 362 a.a) partial recombinant protein with GST tag. MW of the GST tag alone is 26 KDa.
<b>Dilution</b>	WB~~1:500~1000 IP~~N/A E~~N/A
<b>Format</b>	Clear, colorless solution in phosphate buffered saline, pH 7.2 .
<b>Storage</b>	Store at -20°C or lower. Aliquot to avoid repeated freezing and thawing.
<b>Precautions</b>	F2 Antibody (monoclonal) (M01) is for research use only and not for use in diagnostic or therapeutic procedures.

### Background

---

Coagulation factor II is proteolytically cleaved to form thrombin in the first step of the coagulation cascade which ultimately results in the stemming of blood loss. F2 also plays a role in maintaining vascular integrity during development and postnatal life. Mutations in F2 leads to various forms of thrombosis and dysprothrombinemia.

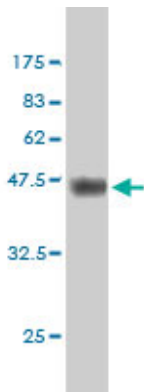
### References

---

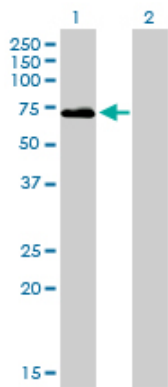
The association of protein S Tokushima-K196E with a risk of deep vein thrombosis. Ikejiri M, et al. Int J Hematol, 2010 Sep. PMID 20811787. Role of Genetic and Acquired Prothrombotic Risk Factors in Genesis of

Sudden Sensorineural Hearing Loss. Fusconi M, et al. *Audiol Neurotol*, 2010 Aug 25. PMID 20798492. Risk of venous thrombosis in pregnancy among carriers of the factor V Leiden and the prothrombin gene G20210A polymorphisms. Jacobsen AF, et al. *J Thromb Haemost*, 2010 Aug 23. PMID 20735725. Prothrombotic state, cardiovascular and metabolic syndrome risk factors in prepubertal children born large-for-gestational age (LGA). Evagelidou EN, et al. *Diabetes Care*, 2010 Aug 19. PMID 20724652. Thrombophilic risk factors for placental stillbirth. Simchen MJ, et al. *Eur J Obstet Gynecol Reprod Biol*, 2010 Aug 11. PMID 20708329.

## Images

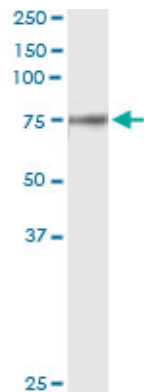


Antibody Reactive Against Recombinant Protein.Western Blot detection against Immunogen (36.74 KDa) .

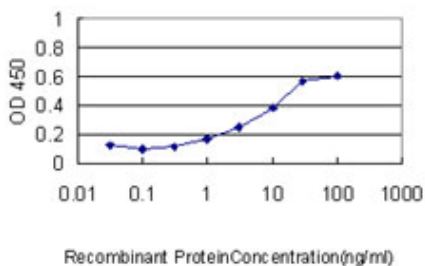


Western Blot analysis of F2 expression in transfected 293T cell line by F2 monoclonal antibody (M01), clone 1B7.

Lane 1: F2 transfected lysate(70 KDa).  
Lane 2: Non-transfected lysate.

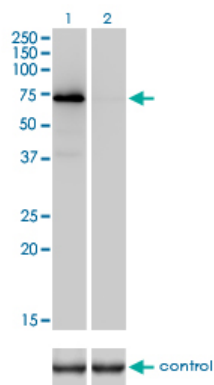


Immunoprecipitation of F2 transfected lysate using anti-F2 monoclonal antibody and Protein A Magnetic Bead ([U0007](#)), and immunoblotted with F2 MaxPab rabbit polyclonal antibody.

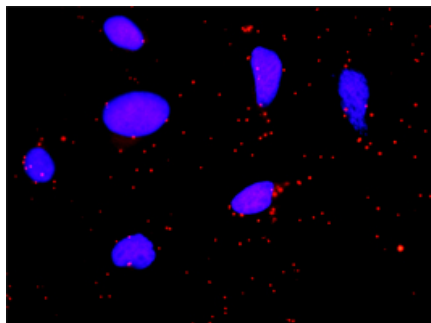


Detection limit for recombinant GST tagged F2 is approximately 1ng/ml as a capture antibody.

Western blot analysis of F2 over-expressed 293 cell line,



cotransfected with F2 Validated Chimera RNAi (Cat # AT1977a )



Proximity Ligation Analysis of protein-protein interactions between FGA and F2. HeLa cells were stained with anti-FGA rabbit purified polyclonal 1:1200 and anti-F2 mouse monoclonal antibody 1:50. Each red dot represents the detection of protein-protein interaction complex, and nuclei were counterstained with DAPI (blue).

Please note: All products are 'FOR RESEARCH USE ONLY. NOT FOR USE IN DIAGNOSTIC OR THERAPEUTIC PROCEDURES'.