

FAM50A Antibody (monoclonal) (M02)

Mouse monoclonal antibody raised against a partial recombinant FAM50A.

Catalog # AT1993a

Product Information

Application	WB, IHC, E
Primary Accession	Q14320
Other Accession	NM_004699
Reactivity	Human, Rat
Host	mouse
Clonality	monoclonal
Isotype	IgG2a Kappa
Clone Names	5F10
Calculated MW	40242

Additional Information

Gene ID	9130
Other Names	Protein FAM50A, Protein HXC-26, Protein XAP-5, FAM50A, DXS9928E, HXC26, XAP5
Target/Specificity	FAM50A (NP_004690, 1 a.a. ~ 88 a.a) partial recombinant protein with GST tag. MW of the GST tag alone is 26 KDa.
Dilution	WB~~1:500~1000 IHC~~1:100~500 E~~N/A
Format	Clear, colorless solution in phosphate buffered saline, pH 7.2 .
Storage	Store at -20°C or lower. Aliquot to avoid repeated freezing and thawing.
Precautions	FAM50A Antibody (monoclonal) (M02) is for research use only and not for use in diagnostic or therapeutic procedures.

Background

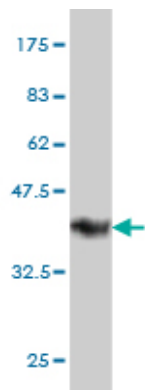
This gene belongs to the FAM50 family. The encoded protein is highly conserved in length and sequence across different species. It is a basic protein containing a nuclear localization signal, and may function as a DNA-binding protein or a transcriptional factor.

References

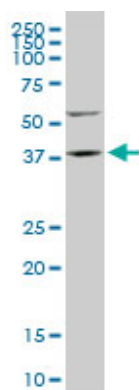
Variation at the NFATC2 Locus Increases the Risk of Thiazolinedinedione-Induced Edema in the Diabetes REduction Assessment with ramipril and rosiglitazone Medication (DREAM) Study. Bailey SD, et al. Diabetes Care, 2010 Jul 13. PMID 20628086. Gene-centric association signals for lipids and apolipoproteins identified

via the HumanCVD BeadChip. Talmud PJ, et al. Am J Hum Genet, 2009 Nov. PMID 19913121. XAP5 CIRCADIAN TIMEKEEPER coordinates light signals for proper timing of photomorphogenesis and the circadian clock in Arabidopsis. Martin-Tryon EL, et al. Plant Cell, 2008 May. PMID 18515502. Toward a confocal subcellular atlas of the human proteome. Barbe L, et al. Mol Cell Proteomics, 2008 Mar. PMID 18029348. The LIFEdb database in 2006. Mehrle A, et al. Nucleic Acids Res, 2006 Jan 1. PMID 16381901.

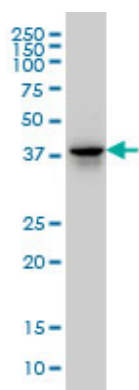
Images



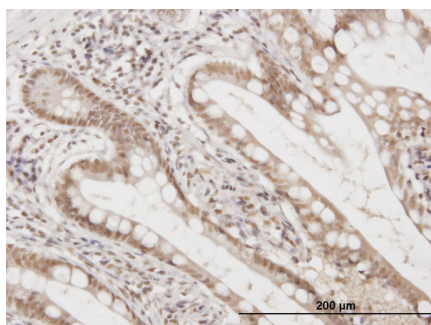
Antibody Reactive Against Recombinant Protein. Western Blot detection against Immunogen (35.42 kDa) .



FAM50A monoclonal antibody (M02), clone 5F10. Western Blot analysis of FAM50A expression in PC-12 (Cat # AT1993a)

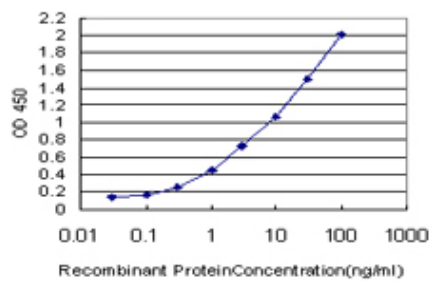


FAM50A monoclonal antibody (M02), clone 5F10 Western Blot analysis of FAM50A expression in Hela S3 NE (Cat # AT1993a)



Immunoperoxidase of monoclonal antibody to FAM50A on formalin-fixed paraffin-embedded human small Intestine. [antibody concentration 0.5 ug/ml]

Detection limit for recombinant GST tagged FAM50A is



approximately 0.1ng/ml as a capture antibody.

Please note: All products are 'FOR RESEARCH USE ONLY. NOT FOR USE IN DIAGNOSTIC OR THERAPEUTIC PROCEDURES'.