

FAP Antibody (monoclonal) (M01)

Mouse monoclonal antibody raised against a partial recombinant FAP.

Catalog # AT1998a

Product Information

| | |
|--------------------------|--------------------------|
| Application | WB, IP, E |
| Primary Accession | Q12884 |
| Other Accession | BC026250 |
| Reactivity | Human |
| Host | mouse |
| Clonality | monoclonal |
| Isotype | IgG2a Kappa |
| Clone Names | 1E6 |
| Calculated MW | 87713 |

Additional Information

| | |
|---------------------------|--|
| Gene ID | 2191 |
| Other Names | Prolyl endopeptidase FAP, 170 kDa melanoma membrane-bound gelatinase, Dipeptidyl peptidase FAP, Fibroblast activation protein alpha, FAPalpha, Serine integral membrane protease, SIMP, Surface-expressed protease, Seprase, Antiplasmin-cleaving enzyme FAP, soluble form, APCE, 3421-, FAP (HGNC:3590) |
| Target/Specificity | FAP (AAH26250, 525 a.a. ~ 624 a.a) partial recombinant protein with GST tag. MW of the GST tag alone is 26 KDa. |
| Dilution | WB~~1:500~1000 IP~~N/A E~~N/A |
| Format | Clear, colorless solution in phosphate buffered saline, pH 7.2 . |
| Storage | Store at -20°C or lower. Aliquot to avoid repeated freezing and thawing. |
| Precautions | FAP Antibody (monoclonal) (M01) is for research use only and not for use in diagnostic or therapeutic procedures. |

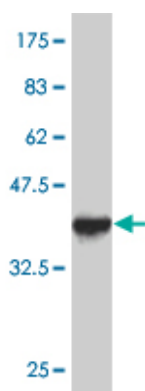
Background

The protein encoded by this gene is a homodimeric integral membrane gelatinase belonging to the serine protease family. It is selectively expressed in reactive stromal fibroblasts of epithelial cancers, granulation tissue of healing wounds, and malignant cells of bone and soft tissue sarcomas. This protein is thought to be involved in the control of fibroblast growth or epithelial-mesenchymal interactions during development, tissue repair, and epithelial carcinogenesis.

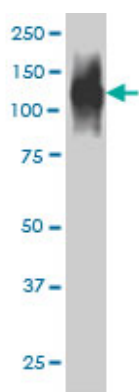
References

1.Fibroblast Activation Protein (FAP) Is Essential for the Migration of Bone Marrow Mesenchymal Stem Cells through RhoA Activation.Chung KM, Hsu SC, Chu YR, Lin MY, Jiaang WT, Chen RH, Chen XPLoS One. 2014 Feb 13;9(2):e88772. doi: 10.1371/journal.pone.0088772. eCollection 2014.2.Extracellular Hsp90 mediates an NF- κ B dependent inflammatory stromal program: Implications for the prostate tumor microenvironment.Bohonowych J, Hance M, Nolan K, Defee M, Parsons C, Isaacs JProstate. 2013 Dec 16. doi: 10.1002/pros.22761.3.Differential impact of TGF-beta and EGF on fibroblast differentiation and invasion reciprocally promotes colon cancer cell invasion.Denys H, Derycke L, Hendrix A, Westbroek W, Gheldof A, Narine K, Pauwels P, Gespach C, Bracke M, De Wever O.Cancer Lett. 2008 Aug 8;266(2):263-74.4.Fibroblast activation protein and chronic liver disease.Wang XM, Yao TW, Nadvi NA, Osborne B, McCaughan GW, Gorrell MD.Front Biosci. 2008 Jan 1;13:3168-80.

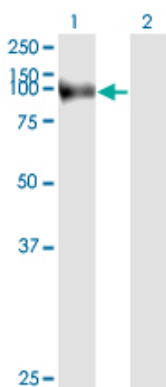
Images



Antibody Reactive Against Recombinant Protein.Western Blot detection against Immunogen (36.74 KDa) .



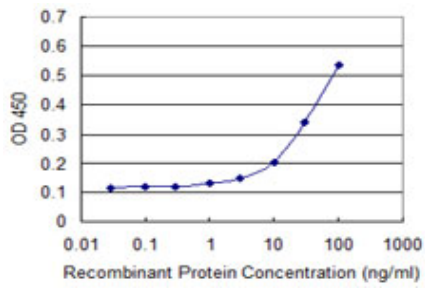
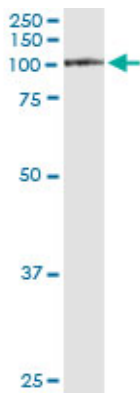
FAP monoclonal antibody (M01), clone 1E5 Western Blot analysis of FAP expression in HepG2 ((Cat # AT1998a)



Western Blot analysis of FAP expression in transfected 293T cell line by FAP monoclonal antibody (M01), clone 1E5.

Lane 1: FAP transfected lysate(87.7 KDa).
Lane 2: Non-transfected lysate.

Immunoprecipitation of FAP transfected lysate using anti-FAP monoclonal antibody and Protein A Magnetic Bead ([U0007](#)), and immunoblotted with FAP MaxPab rabbit polyclonal antibody.



Detection limit for recombinant GST tagged FAP is approximately 0.1ng/ml as a capture antibody.

Please note: All products are 'FOR RESEARCH USE ONLY. NOT FOR USE IN DIAGNOSTIC OR THERAPEUTIC PROCEDURES'.