

# FBLIM1 Antibody (monoclonal) (M10)

Mouse monoclonal antibody raised against a partial recombinant FBLIM1.

Catalog # AT2008a

## Product Information

---

Application	WB, E
Primary Accession	<a href="#">Q8WUP2</a>
Other Accession	<a href="#">NM_017556</a>
Reactivity	Human
Host	mouse
Clonality	monoclonal
Isotype	IgG2a Kappa
Clone Names	5E12
Calculated MW	40670

## Additional Information

---

Gene ID	54751
Other Names	Filamin-binding LIM protein 1, FBLP-1, Migfilin, Mitogen-inducible 2-interacting protein, MIG2-interacting protein, FBLIM1, FBLP1
Target/Specificity	FBLIM1 (NP_060026, 270 a.a. ~ 373 a.a) partial recombinant protein with GST tag. MW of the GST tag alone is 26 KDa.
Dilution	WB~~1:500~1000 E~~N/A
Format	Clear, colorless solution in phosphate buffered saline, pH 7.2 .
Storage	Store at -20°C or lower. Aliquot to avoid repeated freezing and thawing.
Precautions	FBLIM1 Antibody (monoclonal) (M10) is for research use only and not for use in diagnostic or therapeutic procedures.

## Background

---

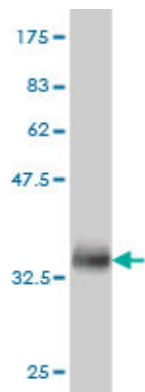
This gene encodes a protein with an N-terminal filamin-binding domain, a central proline-rich domain, and multiple C-terminal LIM domains. This protein localizes at cell junctions and may link cell adhesion structures to the actin cytoskeleton. This protein may be involved in the assembly and stabilization of actin-filaments and likely plays a role in modulating cell adhesion, cell morphology and cell motility. This protein also localizes to the nucleus and may affect cardiomyocyte differentiation after binding with the CSX/NKX2-5 transcription factor. Alternative splicing results in multiple transcript variants encoding different isoforms.

## References

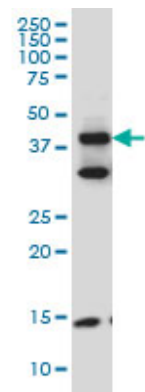
---

1.Kindlin-1 Is Required for RhoGTPase-Mediated Lamellipodia Formation in Keratinocytes.Has C, Herz C, Zimina E, Qu HY, He Y, Zhang ZG, Wen TT, Gache Y, Aumailley M, Bruckner-Tuderman L.Am J Pathol. 2009 Oct;175(4):1442-52. Epub 2009 Sep 17.

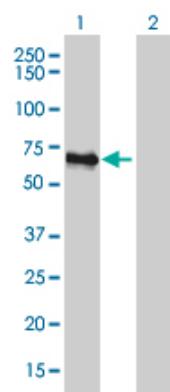
Images



Antibody Reactive Against Recombinant Protein.Western Blot detection against Immunogen (37.18 KDa) .

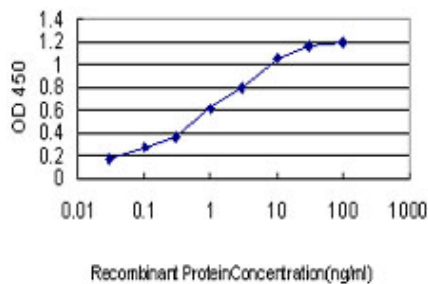


FBLIM1 monoclonal antibody (M10), clone 5E11 Western Blot analysis of FBLIM1 expression in HepG2 ( (Cat # AT2008a )



Western Blot analysis of FBLIM1 expression in transfected 293T cell line by FBLIM1 monoclonal antibody (M10), clone 5E11.

Lane 1: FBLIM1 transfected lysate(41 KDa).  
Lane 2: Non-transfected lysate.



Detection limit for recombinant GST tagged FBLIM1 is approximately 0.03ng/ml as a capture antibody.

Please note: All products are 'FOR RESEARCH USE ONLY. NOT FOR USE IN DIAGNOSTIC OR THERAPEUTIC PROCEDURES'.