

FBXL3 Antibody (monoclonal) (M01)

Mouse monoclonal antibody raised against a partial recombinant FBXL3.

Catalog # AT2013a

Product Information

Application	WB, E
Primary Accession	Q9UKT7
Other Accession	NM_012158
Reactivity	Human
Host	mouse
Clonality	monoclonal
Isotype	IgG2a Kappa
Clone Names	3C4
Calculated MW	48707

Additional Information

Gene ID	26224
Other Names	F-box/LRR-repeat protein 3, F-box and leucine-rich repeat protein 3A, F-box/LRR-repeat protein 3A, FBXL3, FBL3A, FBXL3A
Target/Specificity	FBXL3 (NP_036290, 1 a.a. ~ 100 a.a) partial recombinant protein with GST tag. MW of the GST tag alone is 26 KDa.
Dilution	WB~~1:500~1000 E~~N/A
Format	Clear, colorless solution in phosphate buffered saline, pH 7.2 .
Storage	Store at -20°C or lower. Aliquot to avoid repeated freezing and thawing.
Precautions	FBXL3 Antibody (monoclonal) (M01) is for research use only and not for use in diagnostic or therapeutic procedures.

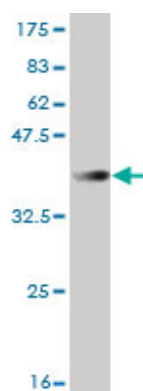
Background

This gene encodes a member of the F-box protein family which is characterized by an approximately 40 amino acid motif, the F-box. The F-box proteins constitute one of the four subunits of ubiquitin protein ligase complex called SCFs (SKP1-cullin-F-box), which function in phosphorylation-dependent ubiquitination. The F-box proteins are divided into 3 classes: Fbws containing WD-40 domains, Fbls containing leucine-rich repeats, and Fbxs containing either different protein-protein interaction modules or no recognizable motifs. The protein encoded by this gene belongs to the Fbls class and, in addition to an F-box, contains several tandem leucine-rich repeats and is localized in the nucleus.

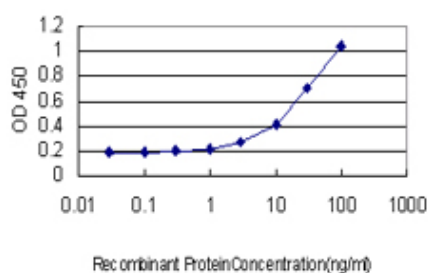
References

SCFFbxl3 controls the oscillation of the circadian clock by directing the degradation of cryptochrome proteins. Busino L, et al. Science, 2007 May 11. PMID 17463251. Diversification of transcriptional modulation: large-scale identification and characterization of putative alternative promoters of human genes. Kimura K, et al. Genome Res, 2006 Jan. PMID 16344560. The status, quality, and expansion of the NIH full-length cDNA project: the Mammalian Gene Collection (MGC). Gerhard DS, et al. Genome Res, 2004 Oct. PMID 15489334. Generation and initial analysis of more than 15,000 full-length human and mouse cDNA sequences. Strausberg RL, et al. Proc Natl Acad Sci U S A, 2002 Dec 24. PMID 12477932. cDNA cloning and expression analysis of new members of the mammalian F-box protein family. Ilyin GP, et al. Genomics, 2000 Jul 1. PMID 10945468.

Images



Antibody Reactive Against Recombinant Protein. Western Blot detection against Immunogen (36.74 KDa) .



Detection limit for recombinant GST tagged FBXL3 is approximately 1 ng/ml as a capture antibody.

Please note: All products are 'FOR RESEARCH USE ONLY. NOT FOR USE IN DIAGNOSTIC OR THERAPEUTIC PROCEDURES'.