

FGL1 Antibody (monoclonal) (M01)

Mouse monoclonal antibody raised against a full length recombinant FGL1.

Catalog # AT2040a

Product Information

| | |
|-------------------|--------------------------|
| Application | WB, IP, E |
| Primary Accession | Q08830 |
| Other Accession | BC007047 |
| Reactivity | Human |
| Host | mouse |
| Clonality | monoclonal |
| Isotype | IgG2b Kappa |
| Clone Names | 2A4 |
| Calculated MW | 36379 |

Additional Information

| | |
|--------------------|--|
| Gene ID | 2267 |
| Other Names | Fibrinogen-like protein 1, HP-041, Hepassocin, Hepatocyte-derived fibrinogen-related protein 1, HFREP-1, Liver fibrinogen-related protein 1, LFIRE-1, FGL1, HFREP1 |
| Target/Specificity | FGL1 (AAH07047.1, 19 a.a. ~ 312 a.a) full-length recombinant protein with GST tag. MW of the GST tag alone is 26 KDa. |
| Dilution | WB~~1:500~1000 IP~~N/A E~~N/A |
| Format | Clear, colorless solution in phosphate buffered saline, pH 7.2 . |
| Storage | Store at -20°C or lower. Aliquot to avoid repeated freezing and thawing. |
| Precautions | FGL1 Antibody (monoclonal) (M01) is for research use only and not for use in diagnostic or therapeutic procedures. |

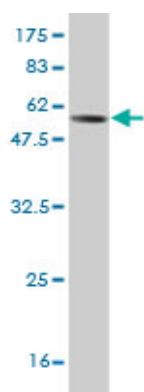
Background

Fibrinogen-like 1 is a member of the fibrinogen family. This protein is homologous to the carboxy terminus of the fibrinogen beta- and gamma- subunits which contains the four conserved cysteines of fibrinogens and fibrinogen related proteins. However, this protein lacks the platelet-binding site, cross-linking region and a thrombin-sensitive site which are necessary for fibrin clot formation. This protein may play a role in the development of hepatocellular carcinomas. Four alternatively spliced transcript variants encoding the same protein exist for this gene.

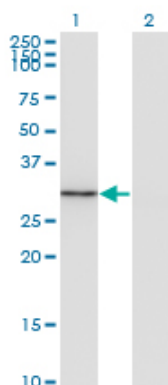
References

Variation at the NFATC2 Locus Increases the Risk of Thiazolinedinedione-Induced Edema in the Diabetes REduction Assessment with ramipril and rosiglitazone Medication (DREAM) Study. Bailey SD, et al. Diabetes Care, 2010 Jul 13. PMID 20628086. Personalized smoking cessation: interactions between nicotine dose, dependence and quit-success genotype score. Rose JE, et al. Mol Med, 2010 Jul-Aug. PMID 20379614. Gene-centric association signals for lipids and apolipoproteins identified via the HumanCVD BeadChip. Talmud PJ, et al. Am J Hum Genet, 2009 Nov. PMID 19913121. Secreted protein acidic and rich in cysteine (SPARC) gene polymorphism association with hepatocellular carcinoma in Italian patients. Segat L, et al. J Gastroenterol Hepatol, 2009 Dec. PMID 19817957. Specific expression and regulation of hepassocin in the liver and down-regulation of the correlation of HNF1alpha with decreased levels of hepassocin in human hepatocellular carcinoma. Yu HT, et al. J Biol Chem, 2009 May 15. PMID 19304666.

Images

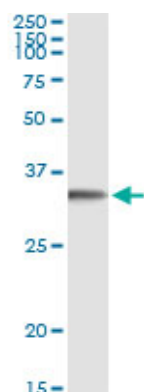


Antibody Reactive Against Recombinant Protein. Western Blot detection against Immunogen (57.97 KDa) .



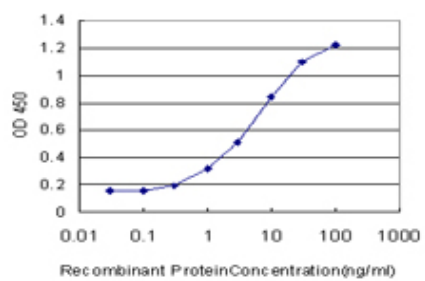
Western Blot analysis of FGL1 expression in transfected 293T cell line by FGL1 monoclonal antibody (M01), clone 2A4.

Lane 1: FGL1 transfected lysate (36.4 KDa).
Lane 2: Non-transfected lysate.



Immunoprecipitation of FGL1 transfected lysate using anti-FGL1 monoclonal antibody and Protein A Magnetic Bead ([U0007](#)), and immunoblotted with FGL1 MaxPab rabbit polyclonal antibody.

Detection limit for recombinant GST tagged FGL1 is approximately 0.3ng/ml as a capture antibody.



Please note: All products are 'FOR RESEARCH USE ONLY. NOT FOR USE IN DIAGNOSTIC OR THERAPEUTIC PROCEDURES'.