

FGL2 Antibody (monoclonal) (M01)

Mouse monoclonal antibody raised against a partial recombinant FGL2.

Catalog # AT2042a

Product Information

Application	WB, IHC, IP, E
Primary Accession	Q14314
Other Accession	NM_006682
Reactivity	Human, Mouse, Rat
Host	mouse
Clonality	monoclonal
Isotype	IgG2a Kappa
Clone Names	6D9
Calculated MW	50229

Additional Information

Gene ID	10875
Other Names	Fibroleukin, Fibrinogen-like protein 2, pT49, FGL2
Target/Specificity	FGL2 (NP_006673, 24 a.a. ~ 123 a.a) partial recombinant protein with GST tag. MW of the GST tag alone is 26 KDa.
Dilution	WB~~1:500~1000 IHC~~1.5ug/ml IP~~N/A E~~N/A
Format	Clear, colorless solution in phosphate buffered saline, pH 7.2 .
Storage	Store at -20°C or lower. Aliquot to avoid repeated freezing and thawing.
Precautions	FGL2 Antibody (monoclonal) (M01) is for research use only and not for use in diagnostic or therapeutic procedures.

Background

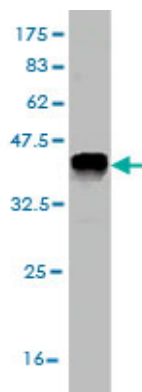
The protein encoded by this gene is a secreted protein that is similar to the beta- and gamma-chains of fibrinogen. The carboxyl-terminus of the encoded protein consists of the fibrinogen-related domains (FRED). The encoded protein forms a tetrameric complex which is stabilized by interchain disulfide bonds. This protein may play a role in physiologic functions at mucosal sites.

References

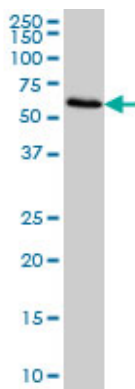
1. Novel Antibody against a Glutamic Acid-Rich Human Fibrinogen-Like Protein 2-Derived Peptide near Ser91 Inhibits hfgl2 Prothrombinase Activity. Li WZ, Wang J, Long R, Su GH, Bukhory DK, Dai J, Jin N, Huang SY, Jia P, Li T, Fan C, Liu K, Wang ZPLoS One. 2014 Apr 11;9(4):e94551. doi: 10.1371/journal.pone.0094551. eCollection

2014.2.Intestinal and peripheral fibrinogen-like protein 2 expression in inflammatory bowel disease.Dong X, Ye X, Chen X, Chen T, Xie S, Li Q, Lin X, Huang ZDig Dis Sci. 2014 Apr;59(4):769-77. doi: 10.1007/s10620-013-2962-9. Epub 2013 Nov 28.3.Combined Adenovirus-Mediated Artificial microRNAs Targeting mfgl2, mFas, and mTNFR1 Protect against Fulminant Hepatic Failure in Mice.Xi D, Wang M, Ye H, Luo X, Ning QPLoS One. 2013 Nov 26;8(11):e82330. doi: 10.1371/journal.pone.0082330.4.Correlation of fibrinogen-like protein 2 with disease progression in patients with severe acute pancreatitis.Ye X, Huai J, Chen R, Ding J, Chen Y, Cai Z.Exp Ther Med. 2014 Jan;7(1):85-89.5.FGL2/Fibroleukin Mediates Hepatic Reperfusion Injury by Induction of Sinusoidal Endothelial Cell and Hepatocyte Apoptosis in Mice.Selzner N, Liu H, Boehnert MU, Adeyi OA, Shalev I, Bartczak AM, Xue-Zhong M, Manuel J, Rotstein OD, McGilvray ID, Grant DR, Phillips MJ, Levy GA, Selzner M.J Hepatol. 2011 Jul 11. [Epub ahead of print]6.The FGL2/fibroleukin prothrombinase is involved in alveolar macrophage activation in COPD through the MAPK pathway.Liu Y, Xu S, Xiao F, Xiong Y, Wang X, Gao S, Yan W, Ning Q.Biochem Biophys Res Commun. 2010 May 7. [Epub ahead of print]7.Targeted Deletion of fgl2 Leads to Impaired Regulatory T Cell Activity and Development of Autoimmune Glomerulonephritis1.Shalev I, Liu H, Kosciuk C, Bartczak A, Javadi M, Wong KM, Maknojia A, He W, Liu MF, Diao J, Winter E, Manuel J, McCarthy D, Catral M, Gommerman J, Clark DA, Phillips MJ, Gorczynski RR, Zhang L, Downey G, Grant D, Cybulsky MI, Levy G.J Immunol. 2008 Jan 1;180(1):249-60.8.Expression of Prothrombin and Protease Activated Receptors in Human Myometrium During Pregnancy and Labor.O'brien M, Morrison JJ, Smith TJ.Biol Reprod. 2008 Jan;78(1):20-6. Epub 2007 Sep 26.

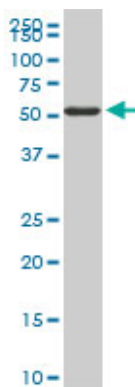
Images



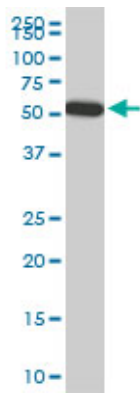
Antibody Reactive Against Recombinant Protein.Western Blot detection against Immunogen (36.74 KDa) .



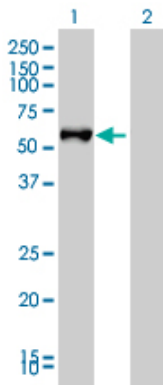
FGL2 monoclonal antibody (M01), clone 6D9 Western Blot analysis of FGL2 expression in HeLa ((Cat # AT2042a)



FGL2 monoclonal antibody (M01), clone 6D9. Western Blot analysis of FGL2 expression in PC-12 ((Cat # AT2042a)

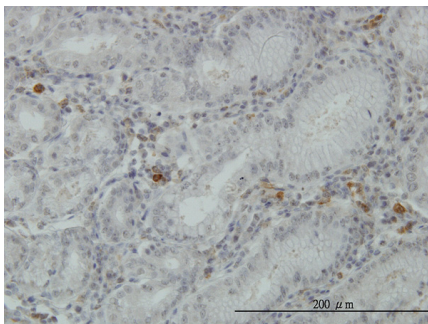


FGL2 monoclonal antibody (M01), clone 6D9. Western Blot analysis of FGL2 expression in Raw 264.7 (Cat # AT2042a)

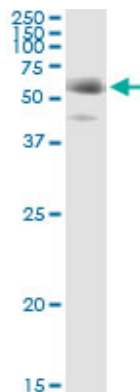


Western Blot analysis of FGL2 expression in transfected 293T cell line by FGL2 monoclonal antibody (M01), clone 6D9.

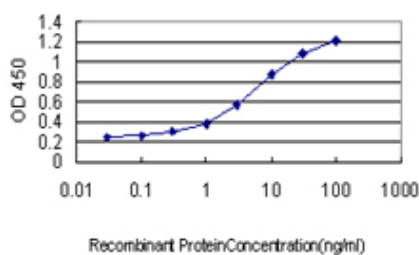
Lane 1: FGL2 transfected lysate(50 KDa).
Lane 2: Non-transfected lysate.



Immunoperoxidase of monoclonal antibody to FGL2 on formalin-fixed paraffin-embedded human stomach. [antibody concentration 0.5 ug/ml]



Immunoprecipitation of FGL2 transfected lysate using anti-FGL2 monoclonal antibody and Protein A Magnetic Bead ([U0007](#)), and immunoblotted with FGL2 MaxPab rabbit polyclonal antibody.



Detection limit for recombinant GST tagged FGL2 is approximately 0.1ng/ml as a capture antibody.

Please note: All products are 'FOR RESEARCH USE ONLY. NOT FOR USE IN DIAGNOSTIC OR THERAPEUTIC PROCEDURES'.