

# FHL1 Antibody (monoclonal) (M01)

Mouse monoclonal antibody raised against a partial recombinant FHL1.

Catalog # AT2048a

## Product Information

---

<b>Application</b>	WB, E
<b>Primary Accession</b>	<a href="#">Q13642</a>
<b>Other Accession</b>	<a href="#">NM_001449</a>
<b>Reactivity</b>	Human, Mouse, Rat
<b>Host</b>	mouse
<b>Clonality</b>	monoclonal
<b>Isotype</b>	IgG2a Kappa
<b>Clone Names</b>	2A9
<b>Calculated MW</b>	36263

## Additional Information

---

<b>Gene ID</b>	2273
<b>Other Names</b>	Four and a half LIM domains protein 1, FHL-1, Skeletal muscle LIM-protein 1, SLIM, SLIM-1, FHL1, SLIM1
<b>Target/Specificity</b>	FHL1 (NP_001440, 23 a.a. ~ 120 a.a) partial recombinant protein with GST tag. MW of the GST tag alone is 26 KDa.
<b>Dilution</b>	WB~~1:500~1000 E~~N/A
<b>Format</b>	Clear, colorless solution in phosphate buffered saline, pH 7.2 .
<b>Storage</b>	Store at -20°C or lower. Aliquot to avoid repeated freezing and thawing.
<b>Precautions</b>	FHL1 Antibody (monoclonal) (M01) is for research use only and not for use in diagnostic or therapeutic procedures.

## Background

---

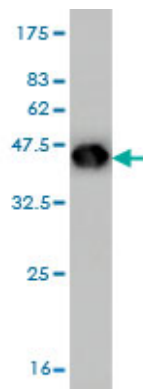
This gene encodes a member of the four-and-a-half-LIM-only protein family. Family members contain two highly conserved, tandemly arranged, zinc finger domains with four highly conserved cysteines binding a zinc atom in each zinc finger. Expression of these family members occurs in a cell- and tissue-specific mode and these proteins are involved in many cellular processes. Mutations in this gene have been found in patients with Emery-Dreifuss muscular dystrophy. Multiple alternately spliced transcript variants which encode different protein isoforms have been described.

## References

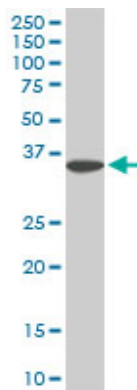
---

1. Carbonic Anhydrase III and Four-and-a-Half LIM Protein 1 are preferentially oxidized with muscle unloading. Chen CN, Ferrington DA, Thompson LV. J Appl Physiol. 2008 Nov;105(5):1554-61. Epub 2008 Aug 28.

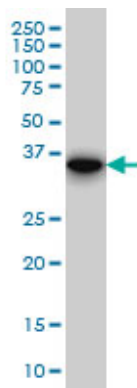
## Images



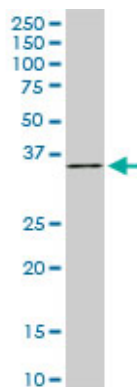
Antibody Reactive Against Recombinant Protein. Western Blot detection against Immunogen (36.52 KDa) .



FHL1 monoclonal antibody (M01), clone 2A9. Western Blot analysis of FHL1 expression in PC-12 (Cat # AT2048a)

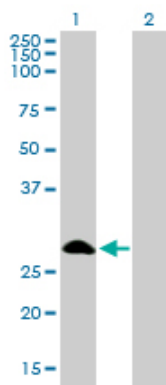


FHL1 monoclonal antibody (M01), clone 2A9. Western Blot analysis of FHL1 expression in Raw 264.7.



FHL1 monoclonal antibody (M01), clone 2A9. Western Blot analysis of FHL1 expression in NIH/3T3 (Cat # AT2048a)

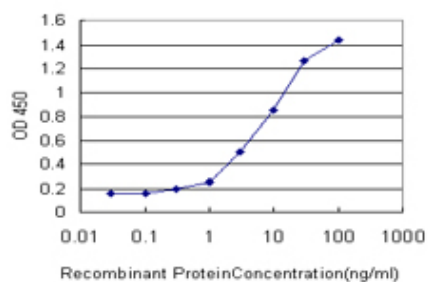
Western Blot analysis of FHL1 expression in transfected



293T cell line by FHL1 monoclonal antibody (M01), clone 2A9.

Lane 1: FHL1 transfected lysate(31.9 kDa).

Lane 2: Non-transfected lysate.



Detection limit for recombinant GST tagged FHL1 is approximately 0.3ng/ml as a capture antibody.

Please note: All products are 'FOR RESEARCH USE ONLY. NOT FOR USE IN DIAGNOSTIC OR THERAPEUTIC PROCEDURES'.