

FHL1 Antibody (monoclonal) (M05)

Mouse monoclonal antibody raised against a partial recombinant FHL1.

Catalog # AT2049a

Product Information

Application	WB, E
Primary Accession	Q13642
Other Accession	NM_001449
Reactivity	Human, Rat
Host	mouse
Clonality	monoclonal
Isotype	IgG2a Kappa
Clone Names	2F7
Calculated MW	36263

Additional Information

Gene ID	2273
Other Names	Four and a half LIM domains protein 1, FHL-1, Skeletal muscle LIM-protein 1, SLIM, SLIM-1, FHL1, SLIM1
Target/Specificity	FHL1 (NP_001440, 23 a.a. ~ 120 a.a) partial recombinant protein with GST tag. MW of the GST tag alone is 26 KDa.
Dilution	WB~~1:500~1000 E~~N/A
Format	Clear, colorless solution in phosphate buffered saline, pH 7.2 .
Storage	Store at -20°C or lower. Aliquot to avoid repeated freezing and thawing.
Precautions	FHL1 Antibody (monoclonal) (M05) is for research use only and not for use in diagnostic or therapeutic procedures.

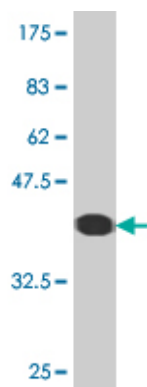
Background

This gene encodes a member of the four-and-a-half-LIM-only protein family. Family members contain two highly conserved, tandemly arranged, zinc finger domains with four highly conserved cysteines binding a zinc atom in each zinc finger. Expression of these family members occurs in a cell- and tissue-specific mode and these proteins are involved in many cellular processes. Mutations in this gene have been found in patients with Emery-Dreifuss muscular dystrophy. Multiple alternately spliced transcript variants which encode different protein isoforms have been described.

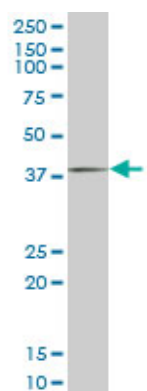
References

1.Clinical Significance of Loss of Fhl1 Expression in Human Gastric Cancer.Sakashita K, Mimori K, Tanaka F, Kamohara Y, Inoue H, Sawada T, Hirakawa K, Mori M.Ann Surg Oncol. 2008 Aug;15(8):2293-300. Epub 2008 May 9.

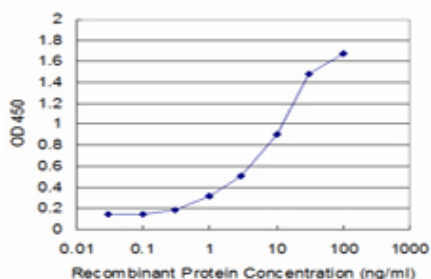
Images



Antibody Reactive Against Recombinant Protein.Western Blot detection against Immunogen (36.52 KDa) .



FHL1 monoclonal antibody (M05), clone 2F7. Western Blot analysis of FHL1 expression in PC-12 ((Cat # AT2049a)



Detection limit for recombinant GST tagged FHL1 is approximately 0.3ng/ml as a capture antibody.

Please note: All products are 'FOR RESEARCH USE ONLY. NOT FOR USE IN DIAGNOSTIC OR THERAPEUTIC PROCEDURES'.