

# FIS1 Antibody (monoclonal) (M01)

Mouse monoclonal antibody raised against a full length recombinant FIS1.

Catalog # AT2052a

## Product Information

---

<b>Application</b>	WB, IHC, E
<b>Primary Accession</b>	<a href="#">Q9Y3D6</a>
<b>Other Accession</b>	<a href="#">BC003540</a>
<b>Reactivity</b>	Human
<b>Host</b>	mouse
<b>Clonality</b>	monoclonal
<b>Isotype</b>	IgG2b Kappa
<b>Clone Names</b>	1G9
<b>Calculated MW</b>	16938

## Additional Information

---

<b>Gene ID</b>	51024
<b>Other Names</b>	Mitochondrial fission 1 protein, FIS1 homolog, hFis1, Tetratricopeptide repeat protein 11, TPR repeat protein 11, FIS1, TTC11
<b>Target/Specificity</b>	FIS1 (AAH03540.1, 1 a.a. ~ 152 a.a) full-length recombinant protein with GST tag. MW of the GST tag alone is 26 KDa.
<b>Dilution</b>	WB~~1:500~1000 IHC~~1:100~500 E~~N/A
<b>Format</b>	Clear, colorless solution in phosphate buffered saline, pH 7.2 .
<b>Storage</b>	Store at -20°C or lower. Aliquot to avoid repeated freezing and thawing.
<b>Precautions</b>	FIS1 Antibody (monoclonal) (M01) is for research use only and not for use in diagnostic or therapeutic procedures.

## Background

---

The balance between fission and fusion regulates the morphology of mitochondria. TTC11 is a component of a mitochondrial complex that promotes mitochondrial fission (James et al., 2003 [PubMed 12783892]).

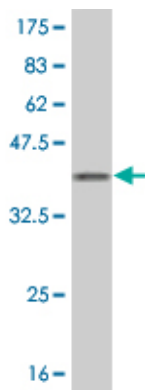
## References

---

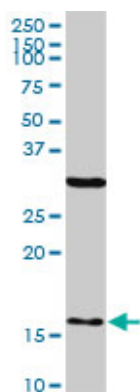
Specific mitochondrial calcium overload induces mitochondrial fission in prostate cancer cells. Kaddour-Djebbar I, et al. Int J Oncol, 2010 Jun. PMID 20428767. Decreased expression of Drp1 and Fis1 mediates mitochondrial elongation in senescent cells and enhances resistance to oxidative stress through PINK1. Mai S, et al. J Cell Sci, 2010 Mar 15. PMID 20179104. Identification and characterization of unique

proline-rich peptides binding to the mitochondrial fission protein hFis1. Serasinghe MN, et al. J Biol Chem, 2010 Jan 1. PMID 19864424. The mitochondrial outer membrane protein hFis1 regulates mitochondrial morphology and fission through self-interaction. Serasinghe MN, et al. Exp Cell Res, 2008 Nov 15. PMID 18845145. Selective actions of mitochondrial fission/fusion genes on metabolism-secretion coupling in insulin-releasing cells. Park KS, et al. J Biol Chem, 2008 Nov 28. PMID 18832378.

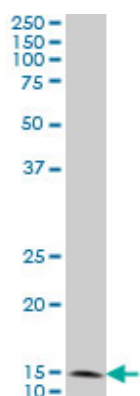
## Images



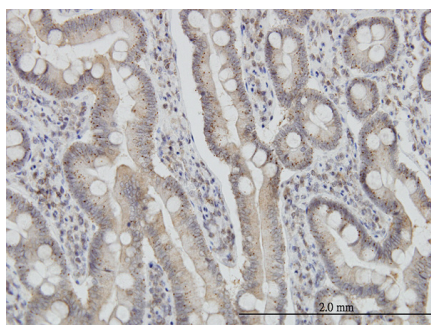
Antibody Reactive Against Recombinant Protein. Western Blot detection against Immunogen (42.46 kDa) .



FIS1 monoclonal antibody (M01), clone 1G9. Western Blot analysis of FIS1 expression in human liver.

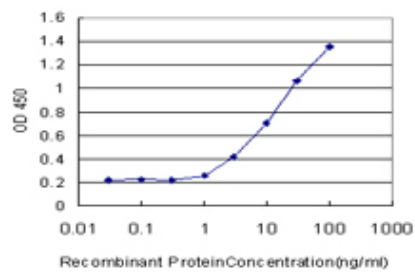


FIS1 monoclonal antibody (M01), clone 1G9 Western Blot analysis of FIS1 expression in A-431 (Cat # AT2052a )



Immunoperoxidase of monoclonal antibody to FIS1 on formalin-fixed paraffin-embedded human small Intestine. [antibody concentration 3 ug/ml]

Detection limit for recombinant GST tagged FIS1 is



approximately 1ng/ml as a capture antibody.

Please note: All products are 'FOR RESEARCH USE ONLY. NOT FOR USE IN DIAGNOSTIC OR THERAPEUTIC PROCEDURES'.