

FKBP10 Antibody (monoclonal) (M01)

Mouse monoclonal antibody raised against a partial recombinant FKBP10.

Catalog # AT2054a

Product Information

Application	WB, E
Primary Accession	Q96AY3
Other Accession	NM_021939
Reactivity	Human
Host	mouse
Clonality	monoclonal
Isotype	IgG2a Kappa
Clone Names	1C6
Calculated MW	64245

Additional Information

Gene ID	60681
Other Names	Peptidyl-prolyl cis-trans isomerase FKBP10, PPIase FKBP10, 65 kDa FK506-binding protein, 65 kDa FKBP, FKBP-65, FK506-binding protein 10, FKBP-10, Immunophilin FKBP65, Rotamase, FKBP10, FKBP65
Target/Specificity	FKBP10 (NP_068758, 377 a.a. ~ 470 a.a) partial recombinant protein with GST tag. MW of the GST tag alone is 26 KDa.
Dilution	WB~~1:500~1000 E~~N/A
Format	Clear, colorless solution in phosphate buffered saline, pH 7.2 .
Storage	Store at -20°C or lower. Aliquot to avoid repeated freezing and thawing.
Precautions	FKBP10 Antibody (monoclonal) (M01) is for research use only and not for use in diagnostic or therapeutic procedures.

Background

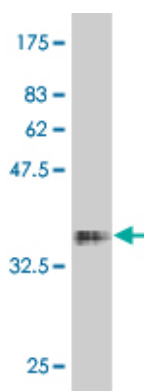
The protein encoded by this gene belongs to the FKBP-type peptidyl-prolyl cis/trans isomerase (PPIase) family. This protein localizes to the endoplasmic reticulum and acts as a molecular chaperone. Alternatively spliced variants encoding different isoforms have been reported, but their biological validity has not been determined.

References

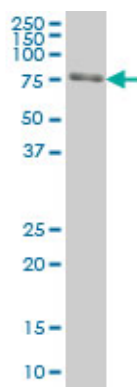
Mutations in the gene encoding the RER protein FKBP65 cause autosomal-recessive osteogenesis

imperfecta. Alanay Y, et al. Am J Hum Genet, 2010 Apr 9. PMID 20362275. Mammalian BTBD12/SLX4 assembles a Holliday junction resolvase and is required for DNA repair. Svendsen JM, et al. Cell, 2009 Jul 10. PMID 19596235. The rough endoplasmic reticulum-resident FK506-binding protein FKBP65 is a molecular chaperone that interacts with collagens. Ishikawa Y, et al. J Biol Chem, 2008 Nov 14. PMID 18786928. Insulin-dependent interactions of proteins with GLUT4 revealed through stable isotope labeling by amino acids in cell culture (SILAC). Foster LJ, et al. J Proteome Res, 2006 Jan. PMID 16396496. Developmental regulation and coordinate reexpression of FKBP65 with extracellular matrix proteins after lung injury suggest a specialized function for this endoplasmic reticulum immunophilin. Patterson CE, et al. Cell Stress Chaperones, 2005 Winter. PMID 16333983.

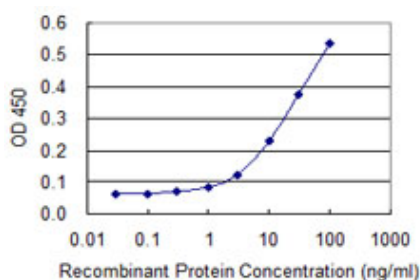
Images



Antibody Reactive Against Recombinant Protein. Western Blot detection against Immunogen (36.08 KDa) .



FKBP10 monoclonal antibody (M01), clone 1C6 Western Blot analysis of FKBP10 expression in HeLa (Cat # AT2054a)



Detection limit for recombinant GST tagged FKBP10 is 1 ng/ml as a capture antibody.

Please note: All products are 'FOR RESEARCH USE ONLY. NOT FOR USE IN DIAGNOSTIC OR THERAPEUTIC PROCEDURES'.