

FLI1 Antibody (monoclonal) (M05)

Mouse monoclonal antibody raised against a full length recombinant FLI1.
Catalog # AT2060a

Product Information

Application	WB, IF
Primary Accession	Q01543
Other Accession	BC001670
Reactivity	Human
Host	mouse
Clonality	monoclonal
Isotype	IgG2b Kappa
Clone Names	1F6
Calculated MW	50982

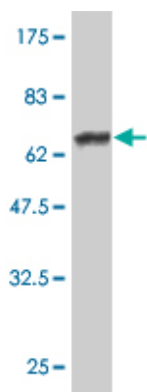
Additional Information

Gene ID	2313
Other Names	Friend leukemia integration 1 transcription factor, Proto-oncogene Fli-1, Transcription factor ERGB, FLI1
Target/Specificity	FLI1 (AAH01670, 1 a.a. ~ 452 a.a) full-length recombinant protein with GST tag. MW of the GST tag alone is 26 KDa.
Dilution	WB~~1:500~1000 IF~~1:50~200
Format	Clear, colorless solution in phosphate buffered saline, pH 7.2 .
Storage	Store at -20°C or lower. Aliquot to avoid repeated freezing and thawing.
Precautions	FLI1 Antibody (monoclonal) (M05) is for research use only and not for use in diagnostic or therapeutic procedures.

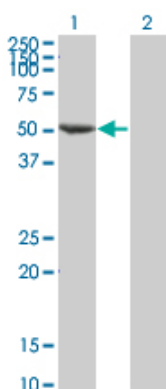
References

EWS-FLI-1 modulates miRNA145 and SOX2 expression to initiate mesenchymal stem cell reprogramming toward Ewing sarcoma cancer stem cells. Riggi N, et al. Genes Dev, 2010 May. PMID 20382729. Personalized smoking cessation: interactions between nicotine dose, dependence and quit-success genotype score. Rose JE, et al. Mol Med, 2010 Jul-Aug. PMID 20379614. Impact of EWS-ETS fusion type on disease progression in Ewing's sarcoma/peripheral primitive neuroectodermal tumor: prospective results from the cooperative Euro-E.W.I.N.G. 99 trial. Le Deley MC, et al. J Clin Oncol, 2010 Apr 20. PMID 20308673. Current treatment protocols have eliminated the prognostic advantage of type 1 fusions in Ewing sarcoma: a report from the Children's Oncology Group. van Doorninck JA, et al. J Clin Oncol, 2010 Apr 20. PMID 20308669. EWS/FLI1 oncogene activates caspase 3 transcription and triggers apoptosis in vivo. Sohn EJ, et al. Cancer Res, 2010

Images

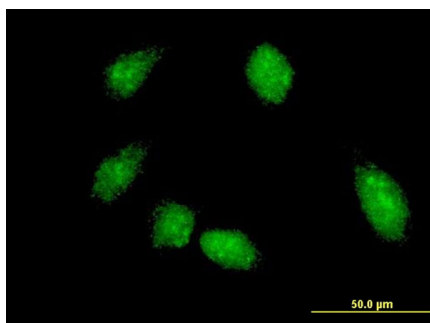


Antibody Reactive Against Recombinant Protein. Western Blot detection against Immunogen (75.46 KDa) .

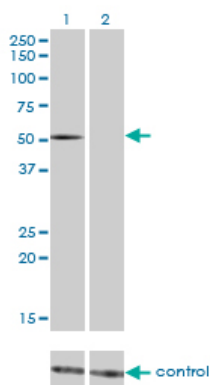


Western Blot analysis of FLI1 expression in transfected 293T cell line by FLI1 monoclonal antibody (M05), clone 1F6.

Lane 1: FLI1 transfected lysate(50.982 KDa).
Lane 2: Non-transfected lysate.



Immunofluorescence of monoclonal antibody to FLI1 on HeLa cell . [antibody concentration 10 ug/ml]



Western blot analysis of FLI1 over-expressed 293 cell line, cotransfected with FLI1 Validated Chimera RNAi ((Cat # AT2060a)

Please note: All products are 'FOR RESEARCH USE ONLY. NOT FOR USE IN DIAGNOSTIC OR THERAPEUTIC PROCEDURES'.