

FLJ20105 Antibody (monoclonal) (M01)

Mouse monoclonal antibody raised against a full length recombinant ERCC6L.

Catalog # AT2066a

Product Information

| | |
|--------------------------|--------------------------|
| Application | WB, E |
| Primary Accession | Q2NWX8 |
| Other Accession | BC008808 |
| Reactivity | Human |
| Host | mouse |
| Clonality | monoclonal |
| Isotype | IgG2a kappa |
| Clone Names | 3F12-2B10 |
| Calculated MW | 141103 |

Additional Information

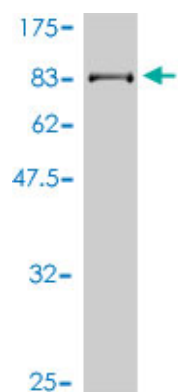
| | |
|---------------------------|---|
| Gene ID | 54821 |
| Other Names | DNA excision repair protein ERCC-6-like, ATP-dependent helicase ERCC6-like, PLK1-interacting checkpoint helicase, Tumor antigen BJ-HCC-15, ERCC6L, PICH |
| Target/Specificity | ERCC6L (AAH08808, 1 a.a. ~ 419 a.a) full-length recombinant protein with GST tag. MW of the GST tag alone is 26 KDa. |
| Dilution | WB~~1:500~1000 E~~N/A |
| Format | Clear, colorless solution in phosphate buffered saline, pH 7.2 . |
| Storage | Store at -20°C or lower. Aliquot to avoid repeated freezing and thawing. |
| Precautions | FLJ20105 Antibody (monoclonal) (M01) is for research use only and not for use in diagnostic or therapeutic procedures. |

References

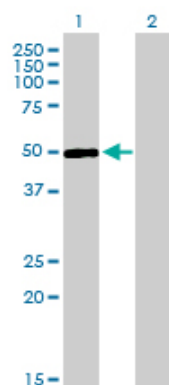
1.PICH and cotargeted Plk1 coordinately maintain prometaphase chromosome arm architecture.Kurasawa Y, Yu-Lee LY.Mol Biol Cell. 2010 Apr;21(7):1188-99. Epub 2010 Feb 3.2.Targeting Plk1 to chromosome arms and regulating chromosome compaction by the PICH ATPase.Leng M, Bessuso D, Jung SY, Wang Y, Qin J.Cell Cycle. 2008 May 15;7(10):1480-9. Epub 2008 Mar 16.

Images

Antibody Reactive Against Recombinant Protein.Western

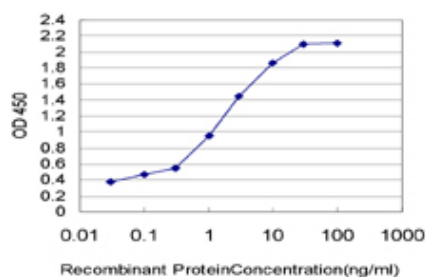


Blot detection against Immunogen (71.61 KDa) .



Western Blot analysis of ERCC6L expression in transfected 293T cell line by ERCC6L monoclonal antibody (M01), clone 3F12-2B10.

Lane 1: ERCC6L transfected lysate(46.2 KDa).
Lane 2: Non-transfected lysate.



Detection limit for recombinant GST tagged ERCC6L is approximately 0.03ng/ml as a capture antibody.

Please note: All products are 'FOR RESEARCH USE ONLY. NOT FOR USE IN DIAGNOSTIC OR THERAPEUTIC PROCEDURES'.