

FLVCR Antibody (monoclonal) (M05)

Mouse monoclonal antibody raised against a partial recombinant FLVCR.

Catalog # AT2075a

Product Information

Application	WB, E
Primary Accession	Q9Y5Y0
Other Accession	NM_014053
Reactivity	Human
Host	mouse
Clonality	monoclonal
Isotype	IgG2b Kappa
Clone Names	4B2
Calculated MW	59863

Additional Information

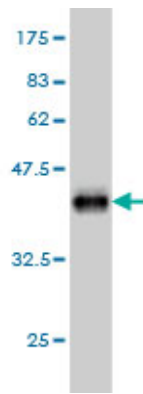
Gene ID	28982
Other Names	Feline leukemia virus subgroup C receptor-related protein 1, Feline leukemia virus subgroup C receptor, hFLVCR, FLVCR1, FLVCR
Target/Specificity	FLVCR (NP_054772, 1 a.a. ~ 83 a.a) partial recombinant protein with GST tag. MW of the GST tag alone is 26 KDa.
Dilution	WB~~1:500~1000 E~~N/A
Format	Clear, colorless solution in phosphate buffered saline, pH 7.2 .
Storage	Store at -20°C or lower. Aliquot to avoid repeated freezing and thawing.
Precautions	FLVCR Antibody (monoclonal) (M05) is for research use only and not for use in diagnostic or therapeutic procedures.

References

1.Heme-Oxygenases during Erythropoiesis in K562 and Human Bone Marrow Cells.Alves LR, Costa ES, Sorgine MH, Nascimento-Silva MC, Teodosio C, Barcena P, Castro-Faria-Neto HC, Bozza PT, Orfao A, Oliveira PL, Maya-Monteiro CM.PLoS One. 2011;6(7):e21358. Epub 2011 Jul 13.

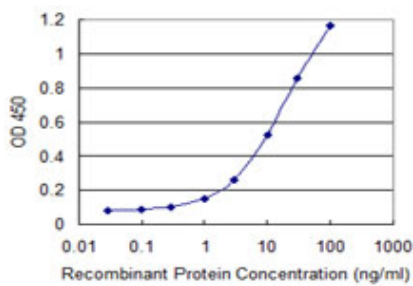
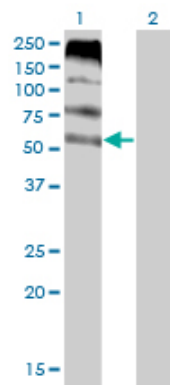
Images

Antibody Reactive Against Recombinant Protein.Western Blot detection against Immunogen (34.87 KDa) .

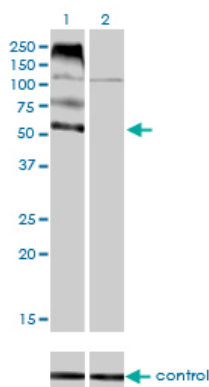


Western Blot analysis of FLVCR expression in transfected 293T cell line by FLVCR monoclonal antibody (M05), clone 4B2.

Lane 1: FLVCR transfected lysate(59.9 KDa).
Lane 2: Non-transfected lysate.



Detection limit for recombinant GST tagged FLVCR1 is 0.3 ng/ml as a capture antibody.



Western blot analysis of FLVCR over-expressed 293 cell line, cotransfected with FLVCR Validated Chimera RNAi (Cat # AT2075a)

Please note: All products are 'FOR RESEARCH USE ONLY. NOT FOR USE IN DIAGNOSTIC OR THERAPEUTIC PROCEDURES'.