

## FOXC2 Antibody (monoclonal) (M02)

Mouse monoclonal antibody raised against a partial recombinant FOXC2.

Catalog # AT2088a

### Product Information

---

<b>Application</b>	WB, IHC, IF, E
<b>Primary Accession</b>	<a href="#">Q99958</a>
<b>Other Accession</b>	<a href="#">NM_005251</a>
<b>Reactivity</b>	Human
<b>Host</b>	mouse
<b>Clonality</b>	monoclonal
<b>Isotype</b>	IgG2b Lambda
<b>Clone Names</b>	2H3
<b>Calculated MW</b>	53719

### Additional Information

---

<b>Gene ID</b>	2303
<b>Other Names</b>	Forkhead box protein C2, Forkhead-related protein FKHL14, Mesenchyme fork head protein 1, MFH-1 protein, Transcription factor FKH-14, FOXC2, FKHL14, MFH1
<b>Target/Specificity</b>	FOXC2 (NP_005242.1, 421 a.a. ~ 501 a.a) partial recombinant protein with GST tag. MW of the GST tag alone is 26 KDa.
<b>Dilution</b>	WB~~1:500~1000 IHC~~1:100~500 IF~~1:50~200 E~~N/A
<b>Format</b>	Clear, colorless solution in phosphate buffered saline, pH 7.2 .
<b>Storage</b>	Store at -20°C or lower. Aliquot to avoid repeated freezing and thawing.
<b>Precautions</b>	FOXC2 Antibody (monoclonal) (M02) is for research use only and not for use in diagnostic or therapeutic procedures.

### Background

---

This gene belongs to the forkhead family of transcription factors which is characterized by a distinct DNA-binding forkhead domain. The specific function of this gene has not yet been determined; however, it may play a role in the development of mesenchymal tissues.

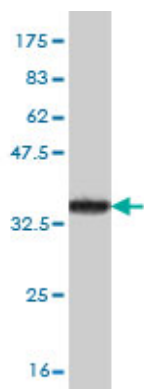
### References

---

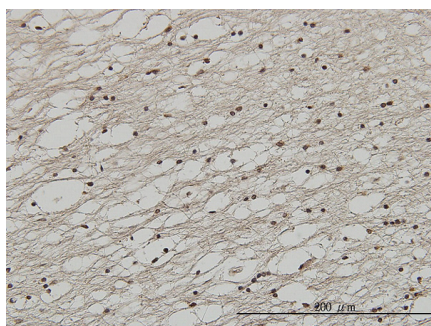
1.MiR-520h-mediated FOXC2 regulation is critical for inhibition of lung cancer progression by resveratrol.Yu YH, Chen HA, Chen PS, Cheng YJ, Hsu WH, Chang YW, Chen YH, Jan Y, Hsiao M, Chang TY, Liu YH, Jeng YM, Wu

CH, Huang MT, Su YH, Hung MC, Chien MH, Chen CY, Kuo ML, Su JL. Oncogene. 2012 Mar 12. doi: 10.1038/onc.2012.74. [Epub ahead of print] 2. FOXC2 is a Novel Prognostic Factor in Human Esophageal Squamous Cell Carcinoma. Nishida N, Mimori K, Yokobori T, Sudo T, Tanaka F, Shibata K, Ishii H, Doki Y, Mori M. Ann Surg Oncol. 2010 Aug 28. [Epub ahead of print]

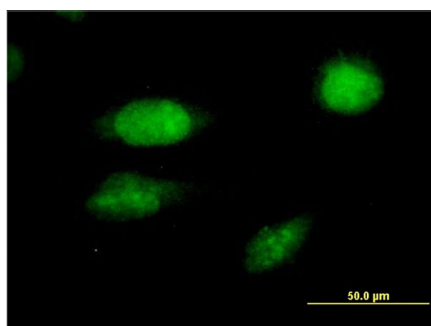
## Images



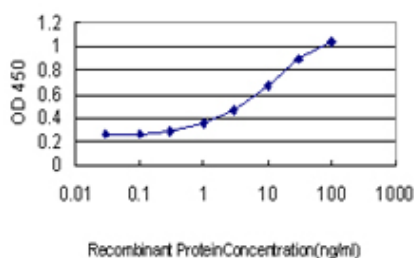
Antibody Reactive Against Recombinant Protein. Western Blot detection against Immunogen (34.65 KDa) .



Immunoperoxidase of monoclonal antibody to FOXC2 on formalin-fixed paraffin-embedded human lateral ventricle wall. [antibody concentration 3 ug/ml]



Immunofluorescence of monoclonal antibody to FOXC2 on HeLa cell. [antibody concentration 10 ug/ml]



Detection limit for recombinant GST tagged FOXC2 is approximately 0.3ng/ml as a capture antibody.

Please note: All products are 'FOR RESEARCH USE ONLY. NOT FOR USE IN DIAGNOSTIC OR THERAPEUTIC PROCEDURES'.