

FOXF2 Antibody (monoclonal) (M08)

Mouse monoclonal antibody raised against a partial recombinant FOXF2.

Catalog # AT2094a

Product Information

Application	WB, IF, E
Primary Accession	Q12947
Other Accession	NM_001452
Reactivity	Human
Host	mouse
Clonality	monoclonal
Isotype	IgG2b Kappa
Clone Names	3D11
Calculated MW	45993

Additional Information

Gene ID	2295
Other Names	Forkhead box protein F2, Forkhead-related activator 2, FREAC-2, Forkhead-related protein FKHL6, Forkhead-related transcription factor 2, FOXF2, FKHL6, FREAC2
Target/Specificity	FOXF2 (NP_001443, 346 a.a. ~ 443 a.a) partial recombinant protein with GST tag. MW of the GST tag alone is 26 KDa.
Dilution	WB~~1:500~1000 IF~~1:50~200 E~~N/A
Format	Clear, colorless solution in phosphate buffered saline, pH 7.2 .
Storage	Store at -20°C or lower. Aliquot to avoid repeated freezing and thawing.
Precautions	FOXF2 Antibody (monoclonal) (M08) is for research use only and not for use in diagnostic or therapeutic procedures.

Background

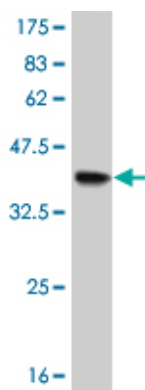
FOXF2 encodes forkhead box F2, one of many human homologues of the Drosophila melanogaster transcription factor forkhead. FOXF2 is expressed in lung and placenta, and has been shown to transcriptionally activate several lung-specific genes.

References

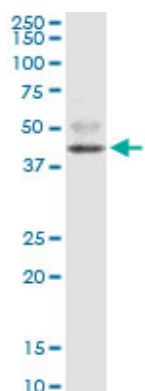
Maternal genes and facial clefts in offspring: a comprehensive search for genetic associations in two population-based cleft studies from Scandinavia. Jugessur A, et al. PLoS One, 2010 Jul 9. PMID 20634891.The

FOXF2 pathway in the human prostate stroma. van der Heul-Nieuwenhuijsen L, et al. Prostate, 2009 Oct 1. PMID 19562724. Mutation analysis of FOXF2 in patients with disorders of sex development (DSD) in combination with cleft palate. Jochumsen U, et al. Sex Dev, 2008. PMID 19276632. Gene expression of forkhead transcription factors in the normal and diseased human prostate. van der Heul-Nieuwenhuijsen L, et al. BJU Int, 2009 Jun. PMID 19220249. Systematic identification of SH3 domain-mediated human protein-protein interactions by peptide array target screening. Wu C, et al. Proteomics, 2007 Jun. PMID 17474147.

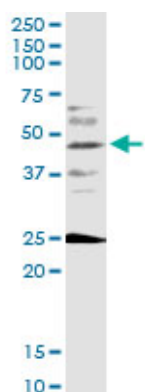
Images



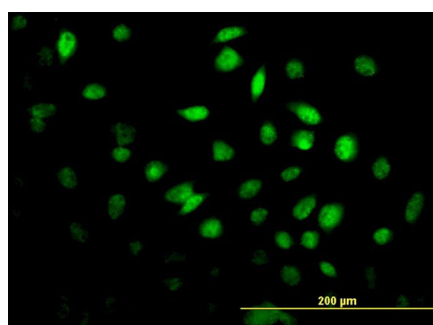
Antibody Reactive Against Recombinant Protein. Western Blot detection against Immunogen (36.89 KDa) .



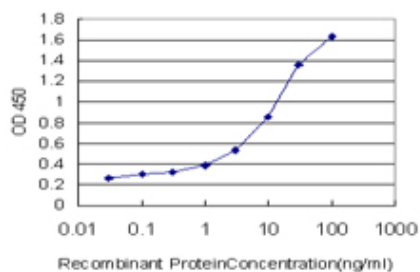
FOXF2 monoclonal antibody (M08), clone 3D11. Western Blot analysis of FOXF2 expression in human placenta.



FOXF2 monoclonal antibody (M08), clone 3D11. Western Blot analysis of FOXF2 expression in A-549.



Immunofluorescence of monoclonal antibody to FOXF2 on HeLa cell. [antibody concentration 10 ug/ml]



Detection limit for recombinant GST tagged FOXF2 is approximately 0.03ng/ml as a capture antibody.

Please note: All products are 'FOR RESEARCH USE ONLY. NOT FOR USE IN DIAGNOSTIC OR THERAPEUTIC PROCEDURES'.