

FRS2 Antibody (monoclonal) (M02)

Mouse monoclonal antibody raised against a partial length recombinant FRS2.

Catalog # AT2108a

Product Information

Application	WB
Primary Accession	Q8WU20
Other Accession	BC021562
Reactivity	Human
Host	Mouse
Clonality	monoclonal
Isotype	IgG1 kappa
Clone Names	1F7-1D6
Calculated MW	57029

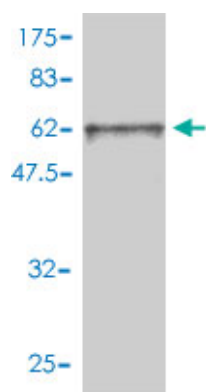
Additional Information

Gene ID	10818
Other Names	Fibroblast growth factor receptor substrate 2, FGFR substrate 2, FGFR-signaling adaptor SNT, Suc1-associated neurotrophic factor target 1, SNT-1, FRS2
Target/Specificity	FRS2 (AAH21562.1, 1 a.a. ~ 341 a.a) partial recombinant protein with GST tag. MW of the GST tag alone is 26 KDa.
Dilution	WB~~1:500~1000
Format	Clear, colorless solution in phosphate buffered saline, pH 7.2 .
Storage	Store at -20°C or lower. Aliquot to avoid repeated freezing and thawing.
Precautions	FRS2 Antibody (monoclonal) (M02) is for research use only and not for use in diagnostic or therapeutic procedures.

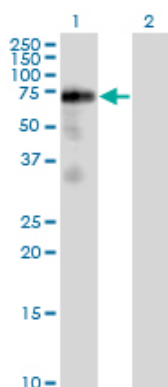
References

FGF-receptor substrate 2 functions as a molecular sensor integrating external regulatory signals into the FGF pathway. Zhou W, et al. Cell Res, 2009 Oct. PMID 19652666. An in vitro analysis of mechanical wounding-induced ligand-independent KGFR activation. Li M, et al. J Dermatol Sci, 2009 Mar. PMID 19111446. Aberrant receptor internalization and enhanced FRS2-dependent signaling contribute to the transforming activity of the fibroblast growth factor receptor 2 IIIb C3 isoform. Cha JY, et al. J Biol Chem, 2009 Mar 6. PMID 19103595. Genomic association analysis suggests chromosome 12 locus influencing antihypertensive response to thiazide diuretic. Turner ST, et al. Hypertension, 2008 Aug. PMID 18591461. Many sequence variants affecting diversity of adult human height. Gudbjartsson DF, et al. Nat

Images



Antibody Reactive Against Recombinant Protein. Western Blot detection against Immunogen (63.14 KDa) .



Western Blot analysis of FRS2 expression in transfected 293T cell line by FRS2 monoclonal antibody (M02), clone 1F7-1D6.

Lane 1: FRS2 transfected lysate(57.5 KDa).

Lane 2: Non-transfected lysate.

Please note: All products are 'FOR RESEARCH USE ONLY. NOT FOR USE IN DIAGNOSTIC OR THERAPEUTIC PROCEDURES'.