

FTCD Antibody (monoclonal) (M01)

Mouse monoclonal antibody raised against a partial recombinant FTCD.

Catalog # AT2112a

Product Information

Application	WB, IHC, IF, E
Primary Accession	O95954
Other Accession	NM_206965
Reactivity	Human
Host	mouse
Clonality	monoclonal
Isotype	IgG2a Kappa
Clone Names	3A4
Calculated MW	58927

Additional Information

Gene ID	10841
Other Names	Formimidoyltransferase-cyclodeaminase, Formiminotransferase-cyclodeaminase, FTCD, LCHC1, Glutamate formimidoyltransferase, Glutamate formiminotransferase, Glutamate formyltransferase, Formimidoyltetrahydrofolate cyclodeaminase, Formiminotetrahydrofolate cyclodeaminase, FTCD
Target/Specificity	FTCD (NP_996848, 440 a.a. ~ 541 a.a) partial recombinant protein with GST tag. MW of the GST tag alone is 26 KDa.
Dilution	WB~~1:500~1000 IHC~~1:100~500 IF~~1:50~200 E~~N/A
Format	Clear, colorless solution in phosphate buffered saline, pH 7.2 .
Storage	Store at -20°C or lower. Aliquot to avoid repeated freezing and thawing.
Precautions	FTCD Antibody (monoclonal) (M01) is for research use only and not for use in diagnostic or therapeutic procedures.

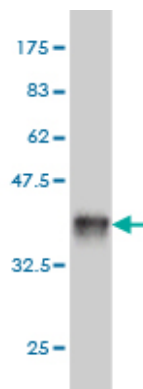
Background

The protein encoded by this gene is a bifunctional enzyme that channels 1-carbon units from formiminoglutamate, a metabolite of the histidine degradation pathway, to the folate pool. Mutations in this gene are associated with glutamate formiminotransferase deficiency. Alternatively spliced transcript variants have been found for this gene.

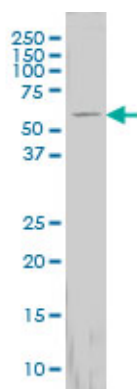
References

Maternal genes and facial clefts in offspring: a comprehensive search for genetic associations in two population-based cleft studies from Scandinavia. Jugessur A, et al. PLoS One, 2010 Jul 9. PMID 20634891. Variation at the NFATC2 Locus Increases the Risk of Thiazolinedione-Induced Edema in the Diabetes REduction Assessment with ramipril and rosiglitazone Medication (DREAM) Study. Bailey SD, et al. Diabetes Care, 2010 Jul 13. PMID 20628086. Gene-centric association signals for lipids and apolipoproteins identified via the HumanCVD BeadChip. Talmud PJ, et al. Am J Hum Genet, 2009 Nov. PMID 19913121. Transcriptomic and genetic studies identify IL-33 as a candidate gene for Alzheimer's disease. Chapuis J, et al. Mol Psychiatry, 2009 Nov. PMID 19204726. An association study of 45 folate-related genes in spina bifida: Involvement of cubilin (CUBN) and tRNA aspartic acid methyltransferase 1 (TRDMT1). Franke B, et al. Birth Defects Res A Clin Mol Teratol, 2009 Mar. PMID 19161160.

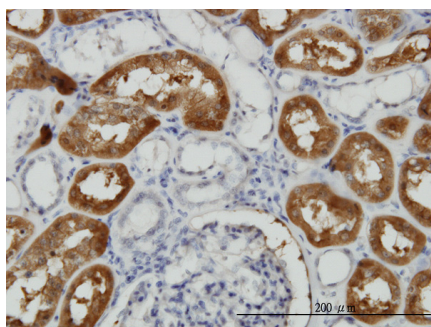
Images



Antibody Reactive Against Recombinant Protein. Western Blot detection against Immunogen (36.96 KDa) .

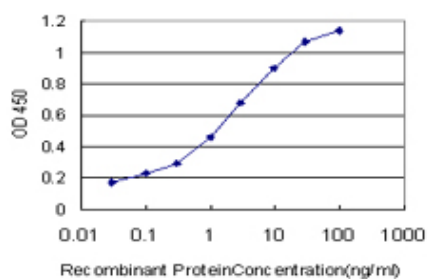
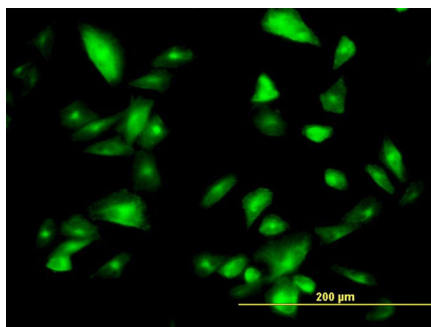


FTCD monoclonal antibody (M01), clone 3A4 Western Blot analysis of FTCD expression in HepG2 ((Cat # AT2112a)



Immunoperoxidase of monoclonal antibody to FTCD on formalin-fixed paraffin-embedded human kidney. [antibody concentration 3 ug/ml]

Immunofluorescence of monoclonal antibody to FTCD on HepG2 cell. [antibody concentration 10 ug/ml]



Detection limit for recombinant GST tagged FTCD is approximately 0.03ng/ml as a capture antibody.

Please note: All products are 'FOR RESEARCH USE ONLY. NOT FOR USE IN DIAGNOSTIC OR THERAPEUTIC PROCEDURES'.