

## FTL Antibody (monoclonal)

Mouse monoclonal antibody raised against a full length native FTL.

Catalog # AT2115a

### Product Information

---

Application	WB, E
Primary Accession	<a href="#">P02792</a>
Other Accession	<a href="#">2512</a>
Reactivity	Human
Host	Mouse
Clonality	monoclonal
Isotype	IgG2b, kappa
Clone Names	4G7
Calculated MW	20020

### Additional Information

---

Gene ID	2512
Other Names	Ferritin light chain, Ferritin L subunit, FTL
Target/Specificity	Native purified human FTL.
Dilution	WB~~1:500~1000 E~~N/A
Format	Clear, colorless solution in phosphate buffered saline, pH 7.2 .
Storage	Store at -20°C or lower. Aliquot to avoid repeated freezing and thawing.
Precautions	FTL Antibody (monoclonal) is for research use only and not for use in diagnostic or therapeutic procedures.

### Background

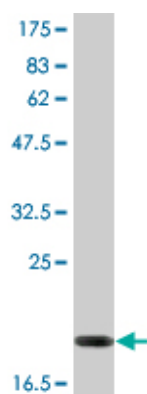
---

This gene encodes the light subunit of the ferritin protein. Ferritin is the major intracellular iron storage protein in prokaryotes and eukaryotes. It is composed of 24 subunits of the heavy and light ferritin chains. Variation in ferritin subunit composition may affect the rates of iron uptake and release in different tissues. A major function of ferritin is the storage of iron in a soluble and nontoxic state. Defects in this light chain ferritin gene are associated with several neurodegenerative diseases and hyperferritinemia-cataract syndrome. This gene has multiple pseudogenes. [provided by RefSeq]

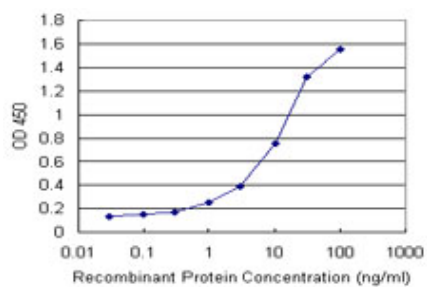
### Images

---

Antibody Reactive Against Native ProteinWestern Blot



detection against Immunogen (47 kDa)



Detection limit for recombinant GST tagged FTL is 1 ng/ml as a capture antibody.

Please note: All products are 'FOR RESEARCH USE ONLY. NOT FOR USE IN DIAGNOSTIC OR THERAPEUTIC PROCEDURES'.