

FZD3 Antibody (monoclonal) (M09)

Mouse monoclonal antibody raised against a partial recombinant FZD3.

Catalog # AT2130a

Product Information

Application	WB, IF, E
Primary Accession	Q9NPG1
Other Accession	NM_017412
Reactivity	Human
Host	mouse
Clonality	monoclonal
Isotype	IgG2a Kappa
Clone Names	2H5
Calculated MW	76263

Additional Information

Gene ID	7976
Other Names	Frizzled-3, Fz-3, hFz3, FZD3
Target/Specificity	FZD3 (NP_059108, 55 a.a. ~ 157 a.a) partial recombinant protein with GST tag. MW of the GST tag alone is 26 KDa.
Dilution	WB~~1:500~1000 IF~~1:50~200 E~~N/A
Format	Clear, colorless solution in phosphate buffered saline, pH 7.2 .
Storage	Store at -20°C or lower. Aliquot to avoid repeated freezing and thawing.
Precautions	FZD3 Antibody (monoclonal) (M09) is for research use only and not for use in diagnostic or therapeutic procedures.

Background

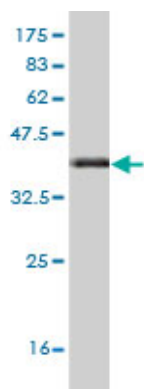
This gene is a member of the frizzled gene family. Members of this family encode seven-transmembrane domain proteins that are receptors for the Wingless type MMTV integration site family of signaling proteins. Most frizzled receptors are coupled to the beta-catenin canonical signaling pathway. The function of this protein is unknown, although it may play a role in mammalian hair follicle development.

References

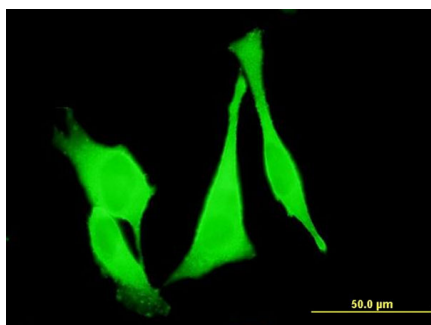
Pathway-based approaches to imaging genetics association studies: Wnt signaling, GSK3beta substrates and major depression. Inkster B, et al. Neuroimage, 2010 Nov 15. PMID 20219685. Secreted Frizzled-related protein-1 is a negative regulator of androgen receptor activity in prostate cancer. Kawano Y, et al. Br J

Cancer, 2009 Apr 7. PMID 19277043. Polymorphisms in genes involved in neurodevelopment may be associated with altered brain morphology in schizophrenia: preliminary evidence. Gregorio SP, et al. Psychiatry Res, 2009 Jan 30. PMID 19054571. Identification of WNT/beta-CATENIN signaling pathway components in human cumulus cells. Wang HX, et al. Mol Hum Reprod, 2009 Jan. PMID 19038973. The Frizzled 3 gene is associated with methamphetamine psychosis in the Japanese population. Kishimoto M, et al. Behav Brain Funct, 2008 Aug 15. PMID 18702828.

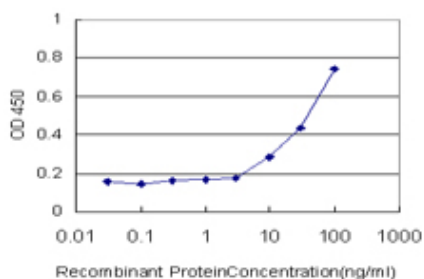
Images



Antibody Reactive Against Recombinant Protein. Western Blot detection against Immunogen (37.07 kDa) .



Immunofluorescence of monoclonal antibody to FZD3 on HeLa cell . [antibody concentration 10 ug/ml]



Detection limit for recombinant GST tagged FZD3 is approximately 10ng/ml as a capture antibody.

Please note: All products are 'FOR RESEARCH USE ONLY. NOT FOR USE IN DIAGNOSTIC OR THERAPEUTIC PROCEDURES'.