

## FZR1 Antibody (monoclonal) (M02)

Mouse monoclonal antibody raised against a full-length recombinant FZR1.

Catalog # AT2132a

### Product Information

---

<b>Application</b>	WB, IHC, E
<b>Primary Accession</b>	<a href="#">Q9UM11</a>
<b>Other Accession</b>	<a href="#">BC013413</a>
<b>Reactivity</b>	Human
<b>Host</b>	mouse
<b>Clonality</b>	monoclonal
<b>Isotype</b>	IgG2a Kappa
<b>Clone Names</b>	4C4
<b>Calculated MW</b>	55179

### Additional Information

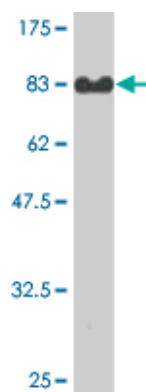
---

<b>Gene ID</b>	51343
<b>Other Names</b>	Fizzy-related protein homolog, Fzr, CDC20-like protein 1, Cdh1/Hct1 homolog, hCDH1, FZR1, CDH1, FYR, FZR, KIAA1242
<b>Target/Specificity</b>	FZR1 (AAH13413.1, 1 a.a. ~ 493 a.a) full-length recombinant protein with GST tag. MW of the GST tag alone is 26 KDa.
<b>Dilution</b>	WB~~1:500~1000 IHC~~1:100~500 E~~N/A
<b>Format</b>	Clear, colorless solution in phosphate buffered saline, pH 7.2 .
<b>Storage</b>	Store at -20°C or lower. Aliquot to avoid repeated freezing and thawing.
<b>Precautions</b>	FZR1 Antibody (monoclonal) (M02) is for research use only and not for use in diagnostic or therapeutic procedures.

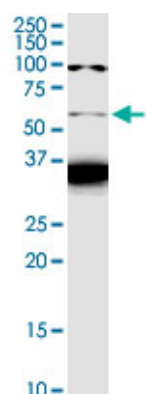
### References

---

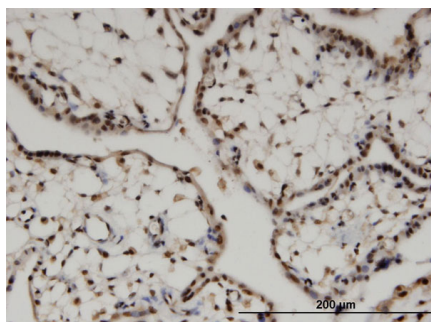
The anaphase-promoting complex/cyclosome activator Cdh1 modulates Rho GTPase by targeting p190 RhoGAP for degradation. Naoe H, et al. Mol Cell Biol, 2010 Aug. PMID 20530197. Centrosome-related genes, genetic variation, and risk of breast cancer. Olson JE, et al. Breast Cancer Res Treat, 2010 May 28. PMID 20508983. Loss of the mammalian APC/C activator FZR1 shortens G1 and lengthens S phase but has little effect on exit from mitosis. Sigl R, et al. J Cell Sci, 2009 Nov 15. PMID 19861496. The Cdc14B-Cdh1-Plk1 axis controls the G2 DNA-damage-response checkpoint. Bassermann F, et al. Cell, 2008 Jul 25. PMID 18662541. Dissection of the APCCdh1-Skp2 cascade in breast cancer. Fujita T, et al. Clin Cancer Res, 2008 Apr 1. PMID 18381934.



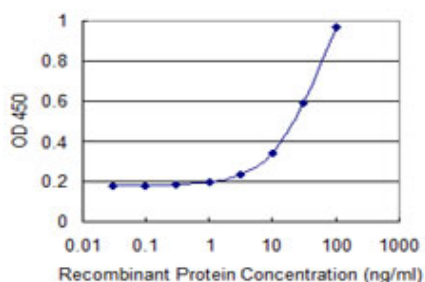
Antibody Reactive Against Recombinant Protein. Western Blot detection against Immunogen (80.08 KDa) .



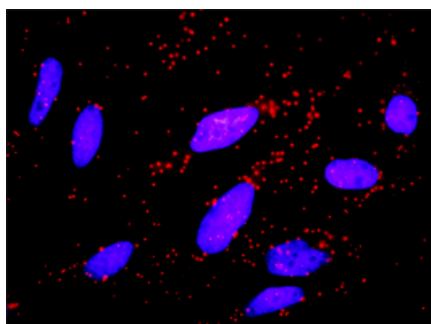
FZR1 monoclonal antibody (M02), clone 4C4. Western Blot analysis of FZR1 expression in HeLa S3 NE.



Immunoperoxidase of monoclonal antibody to FZR1 on formalin-fixed paraffin-embedded human placenta. [antibody concentration 3 ug/ml]



Detection limit for recombinant GST tagged FZR1 is 1 ng/ml as a capture antibody.



Proximity Ligation Analysis of protein-protein interactions between CCNB1 and FZR1. HeLa cells were stained with anti-CCNB1 rabbit purified polyclonal 1:1200 and anti-FZR1 mouse monoclonal antibody 1:50. Each red dot represents the detection of protein-protein interaction complex, and nuclei were counterstained with DAPI (blue).

Please note: All products are 'FOR RESEARCH USE ONLY. NOT FOR USE IN DIAGNOSTIC OR THERAPEUTIC PROCEDURES'.