

G22P1 Antibody (monoclonal) (M01)

Mouse monoclonal antibody raised against a full length recombinant XRCC6.

Catalog # AT2136a

Product Information

Application	WB, IHC, IF, E
Primary Accession	P12956
Other Accession	BC008343
Reactivity	Human
Host	mouse
Clonality	monoclonal
Isotype	IgG1 kappa
Clone Names	4C2-1A6
Calculated MW	69843

Additional Information

Gene ID	2547
Other Names	X-ray repair cross-complementing protein 6, 364-, 4299-, 5'-deoxyribose-5-phosphate lyase Ku70, 5'-dRP lyase Ku70, 70 kDa subunit of Ku antigen, ATP-dependent DNA helicase 2 subunit 1, ATP-dependent DNA helicase II 70 kDa subunit, CTC box-binding factor 75 kDa subunit, CTC75, CTCBF, DNA repair protein XRCC6, Lupus Ku autoantigen protein p70, Ku70, Thyroid-lupus autoantigen, TLAA, X-ray repair complementing defective repair in Chinese hamster cells 6, XRCC6, G22P1
Target/Specificity	XRCC6 (AAH08343.1, 1 a.a. ~ 609 a.a) full-length recombinant protein with GST tag. MW of the GST tag alone is 26 kDa.
Dilution	WB~~1:500~1000 IHC~~1:100~500 IF~~1:50~200 E~~N/A
Format	Clear, colorless solution in phosphate buffered saline, pH 7.2 .
Storage	Store at -20°C or lower. Aliquot to avoid repeated freezing and thawing.
Precautions	G22P1 Antibody (monoclonal) (M01) is for research use only and not for use in diagnostic or therapeutic procedures.

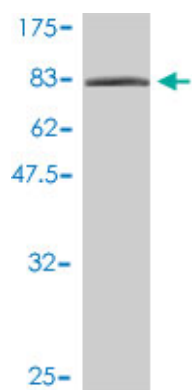
Background

The p70/p80 autoantigen is a nuclear complex consisting of two subunits with molecular masses of approximately 70 and 80 kDa. The complex functions as a single-stranded DNA-dependent ATP-dependent helicase. The complex may be involved in the repair of nonhomologous DNA ends such as that required for double-strand break repair, transposition, and V(D)J recombination. High levels of autoantibodies to p70 and p80 have been found in some patients with systemic lupus erythematosus.

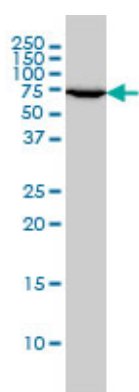
References

1.DNA-PKcs Expression Predicts Response to Radiotherapy in Prostate Cancer.Bouchaert P, Guerif S, Debiais C, Irani J, Fromont G.Int J Radiat Oncol Biol Phys. 2012 Apr 10. [Epub ahead of print]2.Myonuclear breakdown in sporadic inclusion body myositis is accompanied by DNA double strand breaks.Nishii M, Nakano S, Nakamura S, Wate R, Shinde A, Kaneko S, Kusaka H.Neuromuscul Disord. 2011 Feb 23. [Epub ahead of print]

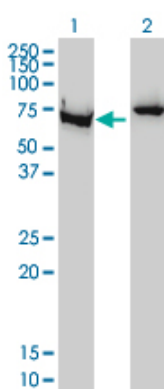
Images



Antibody Reactive Against Recombinant Protein.Western Blot detection against Immunogen (92.73 KDa) .



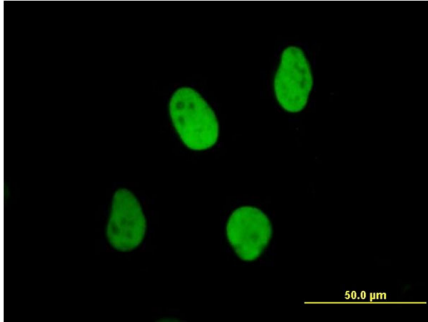
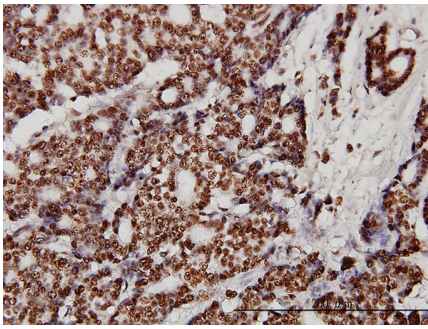
XRCC6 monoclonal antibody (M01), clone 4C2-1A6
Western Blot analysis of XRCC6 expression in C32 ((Cat # AT2136a)



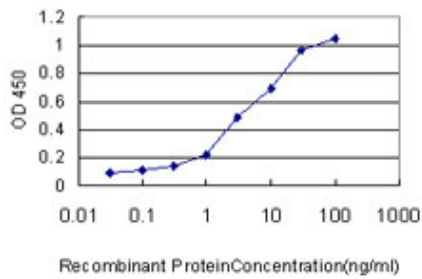
Western Blot analysis of XRCC6 expression in transfected 293T cell line by G22P1 monoclonal antibody (M01), clone 4C2-1A6.

Lane 1: XRCC6 transfected lysate(70 KDa).
Lane 2: Non-transfected lysate.

Immunoperoxidase of monoclonal antibody to XRCC6 on formalin-fixed paraffin-embedded human breast cancer. [antibody concentration 3 ug/ml]



Immunofluorescence of monoclonal antibody to XRCC6 on HeLa cell. [antibody concentration 10 ug/ml]



Detection limit for recombinant GST tagged XRCC6 is approximately 0.1ng/ml as a capture antibody.

Please note: All products are 'FOR RESEARCH USE ONLY. NOT FOR USE IN DIAGNOSTIC OR THERAPEUTIC PROCEDURES'.